

Recombinant Human HCLS1 Protein, GST-tagged

Cat. No. HCLS1-4628H Lot. No. (See product label)

SPECIFICATION

Product Overview	Human HCLS1 full-length ORF (NP_005326.1, 1 a.a. - 486 a.a.) recombinant protein with GST-tag at N-terminal.
Species	Human
Source	Wheat Germ
Description	HCLS1 (Hematopoietic Cell-Specific Lyn Substrate 1) is a Protein Coding gene. Diseases associated with HCLS1 include Spherocytosis, Type 1 and Congenital Hemolytic Anemia. Among its related pathways are Development Slit-Robo signaling and Bacterial invasion of epithelial cells. GO annotations related to this gene include protein kinase binding and protein complex binding. An important paralog of this gene is CTTN.
Molecular Mass	80.4 kDa
AA Sequence	MWKSVVGHDSVSVSVETQGDDWDTDPDFVNDISEKEQRWGAKTIEGSGRTEHINIHLQRNKVSEEHDVLRKKEMESGPKASHGYGGRFGVERDRMDKSAVGHEYVAEVEKHSSQTDAAKGFGGKYGVERDRADKSAVGFDYKGEVEKHTSQKDYSRFGFGGRYGV EKDKWDKAALGYDYKGETEKHESQRDYAKGFGGQYGIQKDRVDKSAVGFNEMEA PTTAYKKTTPIEAASSGARGLKAKFESMAEEKRKREEEKAQQVARRQQRKAVTK RSPEAPQPVIAMEEPAVPAPLPKKISSEAWPPVGTTPPSSESEPVRTSREHPVPLLP IRQTLPEDNEEPPALPPRTLLEGLQVEEPEVYAEPEPEPEPEPENDYEDVEEMDRH EQEDEPEGDYEEVLEPEDSSFSSALAGSSGCPAGAGAGAVALGISAVALYDYQGEG

 Tel: 1-631-559-9269 1-516-512-3133

 Email: info@creative-biomart.com  Fax: 1-631-938-8127

 45-1 Ramsey Road, Shirley, NY 11967, USA

SDELSFDPDDVITDIEMVDEGWWRGRCHGHFGLFPANYVKLLE

Applications
 Enzyme-linked Immunoabsorbent Assay
 Western Blot (Recombinant protein)
 Antibody Production
 Protein Array

Notes Best use within three months from the date of receipt of this protein.

Storage Store at -8 centigrade. Aliquot to avoid repeated freezing and thawing.

Storage Buffer 50 mM Tris-HCl, 10 mM reduced Glutathione, pH=8.0 in the elution buffer.

GENE INFORMATION

Gene Name [HCLS1 hematopoietic cell-specific Lyn substrate 1 \[Homo sapiens \]](#)

Official Symbol [HCLS1](#)

Synonyms HCLS1; hematopoietic cell-specific Lyn substrate 1; hematopoietic lineage cell-specific protein; cortactin like; CTTNL; HS1; p75; lckBP1;

Gene ID [3059](#)

mRNA Refseq [NM_005335](#)

Protein Refseq [NP_005326](#)

MIM [601306](#)

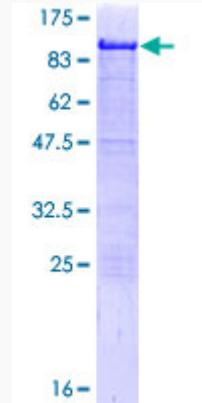
UniProt ID [P14317](#)

 Tel: 1-631-559-9269 1-516-512-3133

 Email: info@creative-biomart.com  Fax: 1-631-938-8127

 45-1 Ramsey Road, Shirley, NY 11967, USA

**Quality Control
Testing**



12.5% SDS-PAGE Stained with Coomassie Blue.

 Tel: 1-631-559-9269 1-516-512-3133

 Email: info@creative-biomart.com  Fax: 1-631-938-8127

 45-1 Ramsey Road, Shirley, NY 11967, USA