

## Recombinant Human HCRTR1 Protein, GST-tagged

**Cat. No.** HCRTR1-4634H    **Lot. No.** (See product label)

### SPECIFICATION

<b>Product Overview</b>	Human HCRTR1 full-length ORF ( AAH74796.1, 1 a.a. - 425 a.a.) recombinant protein with GST-tag at N-terminal.
<b>Species</b>	Human
<b>Source</b>	Wheat Germ
<b>Description</b>	The protein encoded by this gene is a G-protein coupled receptor involved in the regulation of feeding behavior. The encoded protein selectively binds the hypothalamic neuropeptide orexin A. A related gene (HCRTR2) encodes a G-protein coupled receptor that binds orexin A and orexin B. [provided by RefSeq]
<b>Molecular Mass</b>	73.9 kDa
<b>AA Sequence</b>	MEPSATPGAQMGVPPGSREPSVPPDYEDFLRYLWRDYLYPKQYEWVLIAYVA VFVVALVGNTLVCLAVWRNHHMRTVTNYFIVNLSLADVLVTAICLPASLLVDITESWL FGHALCKVIPYLQAVSVSAVLTLSFIALDRWYAICHPLLFKSTARRARGSILGIWAVS LAIMVPQAAMVMECSSVLPELANRTRLFSVCDERWADDLYPKIYHSCFFIVTYLAPLGL MAMAYFQIFRKLWGRQIPGTTLSALVRNWKRPDQLGDLEQGLSGEPQPRARAFLA EVKQMRARRKTAKMLMVLLVFALCYLPISVLNVLKRVFGMFRQASDREAVYACFTF SHWLVYANSAANPIIYNFLSGKFREQFKAAFSCCLPGLGPCGSLKAPSPRSSASHKS LSLQSRCSISKISEHVVLTSVTTVLP
<b>Applications</b>	Enzyme-linked Immunoabsorbent Assay Western Blot (Recombinant protein)

 Tel: 1-631-559-9269    1-516-512-3133

 Email: [info@creative-biomart.com](mailto:info@creative-biomart.com)     Fax: 1-631-938-8127

 45-1 Ramsey Road, Shirley, NY 11967, USA

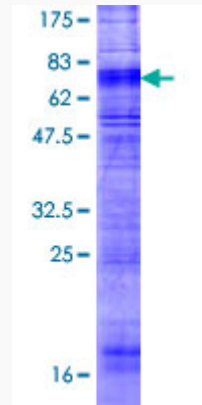
	Antibody Production Protein Array
<b>Notes</b>	Best use within three months from the date of receipt of this protein.
<b>Storage</b>	Store at -8 centigrade. Aliquot to avoid repeated freezing and thawing.
<b>Storage Buffer</b>	50 mM Tris-HCl, 10 mM reduced Glutathione, pH=8.0 in the elution buffer.
<b>GENE INFORMATION</b>	
<b>Gene Name</b>	HCRTR1 hypocretin (orexin) receptor 1 [ Homo sapiens ]
<b>Official Symbol</b>	HCRTR1
<b>Synonyms</b>	HCRTR1; hypocretin (orexin) receptor 1; orexin receptor type 1; OX1R; ox1-R; ox-1-R; orexin receptor 1; orexin receptor-1; hypocretin receptor 1; hypocretin receptor-1; hypocretin receptor type 1;
<b>Gene ID</b>	3061
<b>mRNA Refseq</b>	NM_001525
<b>Protein Refseq</b>	NP_001516
<b>MIM</b>	602392
<b>UniProt ID</b>	O43613

 Tel: 1-631-559-9269 1-516-512-3133

 Email: [info@creative-biomart.com](mailto:info@creative-biomart.com)  Fax: 1-631-938-8127

 45-1 Ramsey Road, Shirley, NY 11967, USA

**Quality Control  
Testing**



12.5% SDS-PAGE Stained with Coomassie Blue.

 Tel: 1-631-559-9269 1-516-512-3133

 Email: [info@creative-biomart.com](mailto:info@creative-biomart.com)  Fax: 1-631-938-8127

 45-1 Ramsey Road, Shirley, NY 11967, USA