

## Recombinant Human HCRTR2 protein, hFc1-tagged

**Cat. No.** HCRTR2-4620H    **Lot. No.** (See product label)

### SPECIFICATION

|                         |   |
|-------------------------|---|
| <b>Product Overview</b> | Recombinant Human HCRTR2 protein(O43614)(1-54 aa), fused with C-terminal hFc tag, was expressed in E.coli.  |
| <b>Species</b>          | Human   |
| <b>Source</b>           | E.coli  |
| <b>ProteinLength</b>    | 1-54 aa   |
| <b>Form</b>             | For liquid formulations, the standard storage buffer consists of a Tris or PBS based solution supplemented with 5-50% glycerol. When provided as lyophilized powder, the product undergoes freeze-drying from a Tris- or PBS-based formulation containing 6% trehalose, adjusted to pH 8.0 prior to the lyophilization process. |
| <b>Molecular Mass</b>   | 32.5 kDa  |
| <b>AASequence</b>       | MSGTKLEDSPPCRNWSSASELNETQEPFLNPTDYDDEEFLRYLWREYLHPKEYE  |
| <b>Purity</b>           | Greater than 85% as determined by SDS-PAGE.   |
| <b>Storage</b>          | Store at -20°C/-80°C upon receipt, aliquoting is necessary for mutiple use. Avoid repeated freeze-thaw cycles.  |
| <b>Reconstitution</b>   | Please reconstitute protein indeionized sterile water to a concentration of 0.1-1.0 mg/mL. Aliquot for long-term storage at -80°C.  |

 Tel: 1-631-559-9269    1-516-512-3133

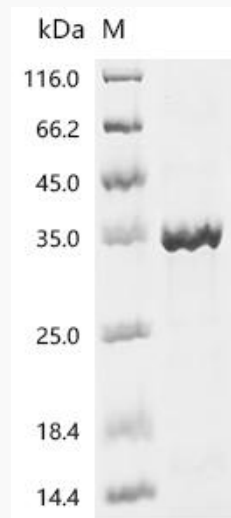
 Email: [info@creative-biomart.com](mailto:info@creative-biomart.com)     Fax: 1-631-938-8127

 45-1 Ramsey Road, Shirley, NY 11967, USA

## GENE INFORMATION

|                        |  |
|------------------------|--|
| <b>Gene Name</b>       | HCRTR2 hypocretin (orexin) receptor 2 [ Homo sapiens ]   |
| <b>Official Symbol</b> | HCRTR2   |
| <b>Synonyms</b>        | HCRTR2; hypocretin (orexin) receptor 2; orexin receptor type 2; OX2R; ox2-R; ox-2-R; hypocretin receptor type 2; |
| <b>Gene ID</b>         | 3062   |
| <b>mRNA Refseq</b>     | NM_001526  |
| <b>Protein Refseq</b>  | NP_001517  |
| <b>MIM</b>             | 602393   |
| <b>UniProt ID</b>      | O43614   |

### SDS-PAGE



Tel: 1-631-559-9269 1-516-512-3133

Email: [info@creative-biomart.com](mailto:info@creative-biomart.com) Fax: 1-631-938-8127

45-1 Ramsey Road, Shirley, NY 11967, USA