

# Recombinant Full Length Human HDAC6 Protein, C-Flag-tagged

**Cat. No.** HDAC6-255HFL    **Lot. No.** (See product label)

## SPECIFICATION

<b>Product Overview</b>	Recombinant Full Length Human HDAC6 Protein, fused to Flag-tag at C-terminus, was expressed in Mammalian cells.
<b>Species</b>	Human
<b>Source</b>	Mammalian Cells
<b>Description</b>	Histones play a critical role in transcriptional regulation, cell cycle progression, and developmental events. Histone acetylation/deacetylation alters chromosome structure and affects transcription factor access to DNA. The protein encoded by this gene belongs to class II of the histone deacetylase/acuc/apha family. It contains an internal duplication of two catalytic domains which appear to function independently of each other. This protein possesses histone deacetylase activity and represses transcription.
<b>Form</b>	25 mM Tris HCl, pH 7.3, 100 mM glycine, 10% glycerol.
<b>Molecular Mass</b>	131.2 kDa
<b>AA Sequence</b>	MTSTGQDSTTTRQRRSRQNPQSPQDSSVTSKRNIKKGAVPR SIPNLAEVKKKGKM K KLGQAMEEDLIVG LQGMDLNLEAEALAGTGLVLDEQLNEFHCLWDDSFPEGPERL HAIKEQLIQEGLLDRCVVSFQARFAEKEE LMLVHSLEYIDL METTQYMNEGELRVLAD TYDSVYLHPNSYSCACLASGSVLRLLVDAVLGAEIRNGMAII RPPGHHAQHSLMDGY CMFNHVAVAARYAQQKHRIRRVLIVDWDVHHGQGTQFTFDQDPSVLYFSIHRYEQ


 Tel: 1-631-559-9269    1-516-512-3133

 Email: [info@creative-biomart.com](mailto:info@creative-biomart.com)     Fax: 1-631-938-8127

 45-1 Ramsey Road, Shirley, NY 11967, USA

GRFWPHLKASNWSTTGFGQQGGYTINVPWNQVGMRDADYIAAFLHVLLPVALEFQ  
PQLVLAAGFDALQG DPKGEMAATPAGFAQLTHLLMGLAGGKILSLEGGYNLRAL  
AEGVSASLHTLLGDPCPMLESPGAPCRSA QASVSCALEALEPFWEVLVLRSTETVER  
DNMEEDNVEESEEEGPWEPPVLPILTWPVLQSRTGLVYDQNM NHCNLWDSHHP  
EVPQRILRIMCRLEELGLAGRCLTLTPRPATEAELLTCHSAEYVGHRLRATEKMKREL  
H RESSNFDSIYICPSTFACAQLATGAACRLVEAVLSGEVLNGAAVVRPPGHAEQD  
AACGFCFFNSVAVAA RHAQTISGHALRILVDWDVHHGNGTQHMFEDDPSVLYVSL  
HRYDHGTFPPMGDEGASSQIGRAAGTGFT VNVAVNGPRMGDADYLAAWHRLVLP  
IAYEFNPELVLSAGFDAARGDPLGGCQVSPEGYAHLTHLLMGLA SGRILLILEGGYN  
LTSISESMAACTRSLLDGPPPLTLPRPPLSGALASITETIQVHRRYWRSLRVMKVE D  
REGPSSSKLVTKKAPQPAKPRLAERMTTREKKVLEAGMGKVTSSASFGEESTPGQTN  
SETAVVALTQDQP SEAATGGATLAQTISEAAIGGAMLGQTTSEEAVGGATPDQTTT  
EETVGGAILDQTTSEDAVGGATLGQTT SEEAVGGATLAQTTSEAMEGATLDQTTT  
EEAPGGTELIQTPLASSTDHQTPTSPVQGTTPQISPSTLI GSLRTLELGSESQGASE  
SQAPGEENLLGEAAGGQDMADSMLMQGSRGLTDQAIFYAVTPLPWCPHLVAVC PI  
PAAGLDVTQPCGDCGTIQENWVCLSCYQVYCGRYINGHMLQHHGNSGHPLVLSYI  
DLSAWCYQCAYV  
HHQALLDVKDIAHQNKFGEDMPHPHTRTRPLEQKLISEEDLAANDILDYKDDDDKV

<b>Purity</b>	> 80% as determined by SDS-PAGE and Coomassie blue staining.
<b>Stability</b>	Stable for 12 months from the date of receipt of the product under proper storage and handling conditions. Avoid repeated freeze-thaw cycles.
<b>Storage</b>	Store at -80 centigrade.
<b>Concentration</b>	>50 ug/mL as determined by microplate BCA method.
<b>Preparation</b>	Recombinant protein was captured through anti-DDK affinity column followed by conventional chromatography steps.

 Tel: 1-631-559-9269 1-516-512-3133

 Email: [info@creative-biomart.com](mailto:info@creative-biomart.com)  Fax: 1-631-938-8127

 45-1 Ramsey Road, Shirley, NY 11967, USA

**Protein Families** Druggable Genome, Transcription Factors

**Full Length** Full L.

## GENE INFORMATION

**Gene Name** HDAC6 histone deacetylase 6 [ Homo sapiens (human) ]

**Official Symbol** HDAC6

**Synonyms** HD6; JM21; CPBHM; PPP1R90

**Gene ID** 10013

**mRNA Refseq** NM\_006044.4

**Protein Refseq** NP\_006035.2

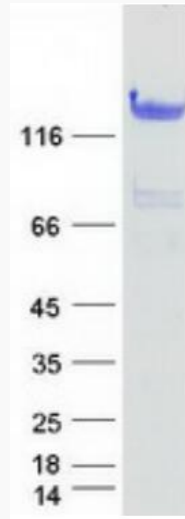
**MIM** 300272

**UniProt ID** Q9UBN7

 Tel: 1-631-559-9269 1-516-512-3133

 Email: [info@creative-biomart.com](mailto:info@creative-biomart.com)  Fax: 1-631-938-8127

 45-1 Ramsey Road, Shirley, NY 11967, USA



Coomassie blue staining of purified HDAC6 protein.

Tel: 1-631-559-9269 1-516-512-3133

Email: [info@creative-biomart.com](mailto:info@creative-biomart.com) Fax: 1-631-938-8127

45-1 Ramsey Road, Shirley, NY 11967, USA