

Active Recombinant Full Length Rat HDAC6 Protein, N-GST-tagged

Cat. No. HDAC6-36RFL **Lot. No.** (See product label)

SPECIFICATION

Product Overview	Recombinant full-length rat HDAC6 was expressed by baculovirus in Sf9 insect cells using an N-terminal GST tag.
Species	Rat
Source	Insect Cells
Description	Enables deacetylase activity. Involved in several processes, including generation of neurons; regulation of protein modification process; and response to glucocorticoid. Located in axon and centrosome. Used to study polycystic kidney disease and polycystic liver disease. Biomarker of hypertension and polycystic liver disease. Human ortholog(s) of this gene implicated in chondrodysplasia with platyspondyly, distinctive brachydactyly, hydrocephaly, and microphthalmia. Orthologous to human HDAC6 (histone deacetylase 6).
Form	50mM Tris-HCl, pH 7.5, 150mM NaCl, 10mM glutathione, 0.1mM EDTA, 0.25mMDTT, 25% glycerol.
Bio-activity	25,618 RLU/min/ng
Molecular Mass	Observed MW ~159 kDa. Calculated MW ~157 kDa.
Purity	>90%

 Tel: 1-631-559-9269 1-516-512-3133

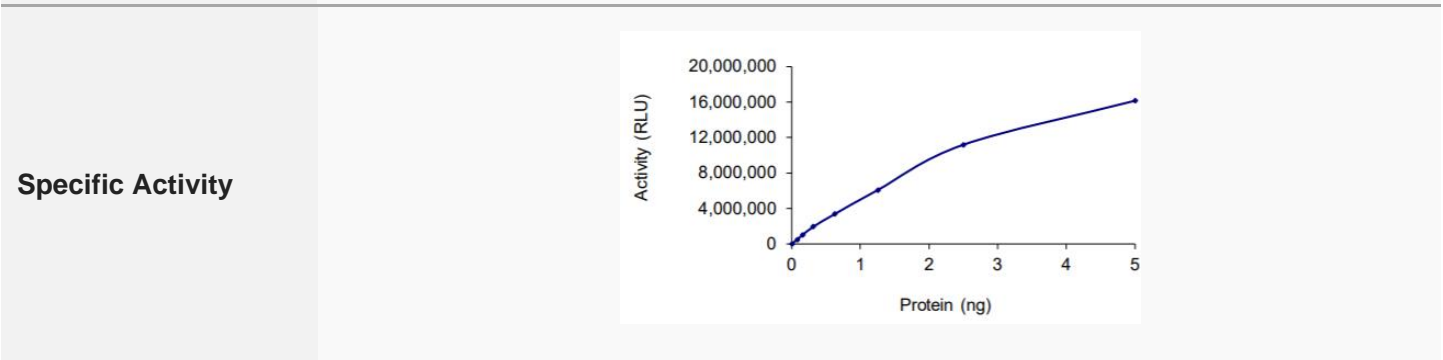
 Email: info@creative-biomart.com  Fax: 1-631-938-8127

 45-1 Ramsey Road, Shirley, NY 11967, USA

Stability	lyr at -70 centigrade from date of shipment.
Storage	Store product at -70 centigrade. For optimal storage, aliquot target in to smaller quantities after centrifugation and store at recommended temperature. For most favorable performance, avoid repeated handling and multiple freeze/thaw cycles.
Concentration	0.1 ug/ul


GENE INFORMATION

Gene Name	Hdac6 histone deacetylase 6 [Rattus norvegicus (Norway rat)]
Official Symbol	HDAC6
Synonyms	HD6; JM21; KIAAO901
Gene ID	108348065
mRNA Refseq	XM_039100468.1
Protein Refseq	XP_038956396.1
UniProt ID	A0A1L5YJQ7



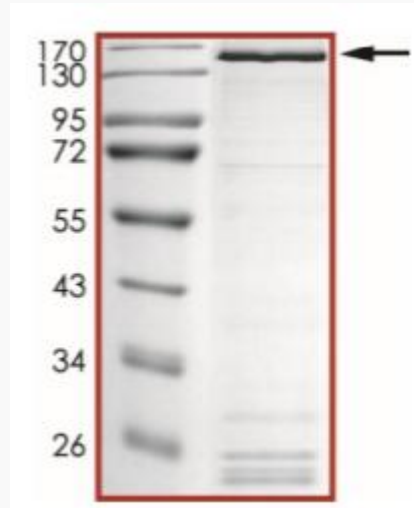
 Tel: 1-631-559-9269 1-516-512-3133

 Email: info@creative-biomart.com  Fax: 1-631-938-8127

 45-1 Ramsey Road, Shirley, NY 11967, USA

The specific activity of HDAC6 was determined to be 23577RLU/min/ng

SDS-PAGE



The purity of HDAC6 was determined to be >90% by densitometry.

 Tel: 1-631-559-9269 1-516-512-3133

 Email: info@creative-biomart.com  Fax: 1-631-938-8127

 45-1 Ramsey Road, Shirley, NY 11967, USA