

# Active Recombinant Full Length Dog HDAC6 Protein, N-GST-tagged

**Cat. No.** HDAC6-37DFL    **Lot. No.** (See product label)

## SPECIFICATION

<b>Product Overview</b>	Recombinant full-length dog HDAC6 was expressed by baculovirus in Sf9 insect cells using an N-terminal GST tag.
<b>Species</b>	Dog
<b>Source</b>	Insect Cells
<b>Description</b>	HDAC6 or Histone deacetylase 6 belongs to the histone deacetylase/acuc/apha family and is a component of the histone deacetylase complex. Histones play a critical role in transcriptional regulation, cell cycle progression, and developmental events. The protein encoded by this gene belongs to class II of the histone deacetylase family that regulates important biologic processes beyond histone metabolism and gene transcription (1). HDAC6 is a central component of the stress response that regulates SG formation and potentially contributes to control of RNA metabolism and translation (2).
<b>Form</b>	50mM Tris-HCl, pH 7.5, 150mM NaCl, 10mM glutathione, 0.1mM EDTA, 0.25mMDTT, 25% glycerol.
<b>Bio-activity</b>	7,125 RLU/min/ng
<b>Molecular Mass</b>	Observed MW ~158 kDa. Calculated MW ~156 kDa.

 Tel: 1-631-559-9269    1-516-512-3133

 Email: [info@creative-biomart.com](mailto:info@creative-biomart.com)     Fax: 1-631-938-8127

 45-1 Ramsey Road, Shirley, NY 11967, USA

<b>Purity</b>	>90%
<b>Stability</b>	lyr at -70 centigrade from date of shipment.
<b>Storage</b>	Store product at -70 centigrade. For optimal storage, aliquot target in to smaller quantities after centrifugation and store at recommended temperature. For most favorable performance, avoid repeated handling and multiple freeze/thaw cycles.
<b>Concentration</b>	0.05 ug/ul

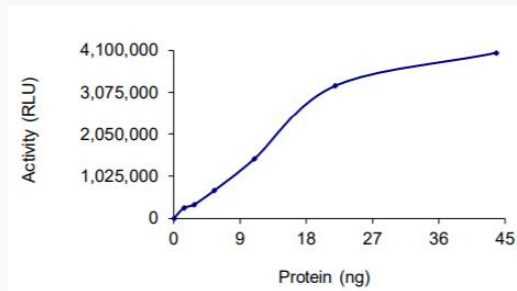
## GENE INFORMATION

<b>Gene Name</b>	HDAC6 histone deacetylase 6 [ <i>Canis lupus familiaris</i> (dog) ]
<b>Official Symbol</b>	HDAC6
<b>Synonyms</b>	HD6; JM21; KIAAO901
<b>Gene ID</b>	480907
<b>mRNA Refseq</b>	XM_038449955.1
<b>Protein Refseq</b>	XP_038305883.1
<b>UniProt ID</b>	A0A8I3Q5U6

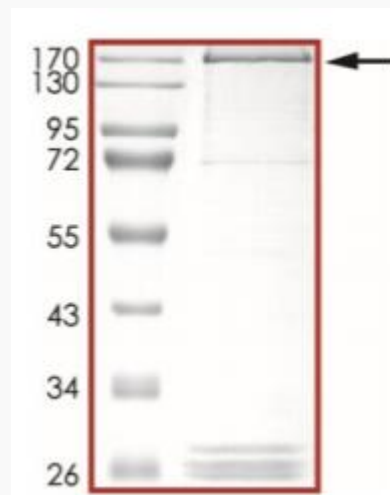
 Tel: 1-631-559-9269 1-516-512-3133

 Email: [info@creative-biomart.com](mailto:info@creative-biomart.com)  Fax: 1-631-938-8127

 45-1 Ramsey Road, Shirley, NY 11967, USA

**Specific Activity**

The specific activity of HDAC6 was determined to be 7125RLU/min/ng as per activity assay protocol.

**SDS-PAGE**

The purity of HDAC6 was determined to be >90% by densitometry.

 Tel: 1-631-559-9269 1-516-512-3133

 Email: [info@creative-biomart.com](mailto:info@creative-biomart.com)  Fax: 1-631-938-8127

 45-1 Ramsey Road, Shirley, NY 11967, USA