

## Recombinant Human HDAC6 Protein, GST-tagged

**Cat. No.** HDAC6-4648H    **Lot. No.** (See product label)

### SPECIFICATION

<b>Product Overview</b>	Human HDAC6 partial ORF ( NP_006035, 1128 a.a. - 1215 a.a.) recombinant protein with GST-tag at N-terminal.
<b>Species</b>	Human
<b>Source</b>	Wheat Germ
<b>Description</b>	Histones play a critical role in transcriptional regulation, cell cycle progression, and developmental events. Histone acetylation/deacetylation alters chromosome structure and affects transcription factor access to DNA. The protein encoded by this gene belongs to class II of the histone deacetylase/acuc/apha family. It contains an internal duplication of two catalytic domains which appear to function independently of each other. This protein possesses histone deacetylase activity and represses transcription. [provided by RefSeq]
<b>Molecular Mass</b>	35.42 kDa
<b>AA Sequence</b>	DVTQPCGDCGTIQENWVCLSCYQVYCGRYINGHMLQHHGNSGHPLVLSYIDLSAW CYYCQAYVHHQALLDVKNIAHQNKFGEDMPHPH
<b>Applications</b>	Enzyme-linked Immunoabsorbent Assay Western Blot (Recombinant protein) Antibody Production Protein Array

 Tel: 1-631-559-9269    1-516-512-3133

 Email: [info@creative-biomart.com](mailto:info@creative-biomart.com)     Fax: 1-631-938-8127

 45-1 Ramsey Road, Shirley, NY 11967, USA

<b>Notes</b>	Best use within three months from the date of receipt of this protein.
<b>Storage</b>	Store at -8 centigrade. Aliquot to avoid repeated freezing and thawing.
<b>Storage Buffer</b>	50 mM Tris-HCl, 10 mM reduced Glutathione, pH=8.0 in the elution buffer.

## GENE INFORMATION

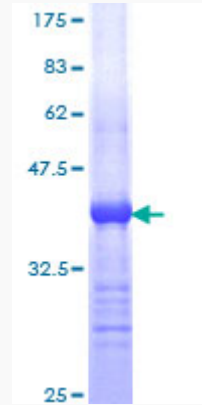
<b>Gene Name</b>	HDAC6 histone deacetylase 6 [ Homo sapiens ]
<b>Official Symbol</b>	HDAC6
<b>Synonyms</b>	HDAC6; histone deacetylase 6; FLJ16239; HD6; JM21; KIAA0901;
<b>Gene ID</b>	10013
<b>mRNA Refseq</b>	NM_006044
<b>Protein Refseq</b>	NP_006035
<b>MIM</b>	300272
<b>UniProt ID</b>	Q9UBN7

 Tel: 1-631-559-9269 1-516-512-3133

 Email: [info@creative-biomart.com](mailto:info@creative-biomart.com)  Fax: 1-631-938-8127

 45-1 Ramsey Road, Shirley, NY 11967, USA

**Quality Control  
Testing**



12.5% SDS-PAGE Stained with Coomassie Blue.

 Tel: 1-631-559-9269 1-516-512-3133

 Email: [info@creative-biomart.com](mailto:info@creative-biomart.com)  Fax: 1-631-938-8127

 45-1 Ramsey Road, Shirley, NY 11967, USA