

# Recombinant Full Length Human HDC Protein, C-Flag-tagged

Cat. No. HDC-988HFL Lot. No. (See product label)

## SPECIFICATION

<b>Product Overview</b>	Recombinant Full Length Human HDC Protein, fused to Flag-tag at C-terminus, was expressed in Mammalian cells.
<b>Species</b>	Human
<b>Source</b>	Mammalian Cells
<b>Description</b>	This gene encodes a member of the group II decarboxylase family and forms a homodimer that converts L-histidine to histamine in a pyridoxal phosphate dependent manner. Histamine regulates several physiologic processes, including neurotransmission, gastric acid secretion, inflammation, and smooth muscle tone.
<b>Form</b>	25 mM Tris HCl, pH 7.3, 100 mM glycine, 10% glycerol.
<b>Molecular Mass</b>	74 kDa
<b>AA Sequence</b>	MMEPEEYRERGREMVDYICQYLSTVRERRVMPDVQPGYLRAQLPESAPEDPDSW DSIFGDIERIIMPGVV HWQSPHMHAYYPALTSWPSLLGDMLADAINCLGFTWASSPA CTELEMNVMDWLAKMLGLPEHFLHHHPSS QGGGVLQSTVSESTLIALLAARKNKIL EMKTSEPDADDESCLNARLVAYASDQAHSSVEKAGLISLVKMKF LPVDDNFSLRGEA LQKAIEEDKQRGLVPVFVFCATLGTTGVCAFDCLSELGPICAREGLWLHIDAAYAGTA FLCPEFRGFLKGIYADSFTFNPSKMMMVFHFDCTGFVWKDKYKLQQTFSVNPIYLR HANSGVATDFMHWQ IPLSRRFRSVKLVFVIRSFVGNLQAHVRHGTETEMAKYFESL VRNDPSFEIPAKRHLGLVVFRLKGNCLT ENVLKEIAKAGRLFLIPATIQDKLIIRFTVT SQFTTRDDILRDWNLIRDAATLILSQHCTSQPSPRVGNL ISQIRGARAWACGTSLSQS

 Tel: 1-631-559-9269 1-516-512-3133

 Email: [info@creative-biomart.com](mailto:info@creative-biomart.com)  Fax: 1-631-938-8127

 45-1 Ramsey Road, Shirley, NY 11967, USA

VSGAGDDPVQARKIIKQPQRVGAGPMKRENGLHLETLLDPVDDCFSEEAPDA TKHK  
 LSSFLFSYLSVQTKKKTVRSLSCNSVPVSAQKPLPTEASVKNNGSSRVRIFSRFPED  
 MMMLKKSAF  
 KKLIKFYSPFPECSSQCGLQLPCCPLQAMVTRTRPLEQKLISEEDLAANDILDYKD  
 DDDKV

**Purity** > 80% as determined by SDS-PAGE and Coomassie blue staining.

**Stability** Stable for 12 months from the date of receipt of the product under proper storage and handling conditions. Avoid repeated freeze-thaw cycles.

**Storage** Store at -80 centigrade.

**Concentration** >50 ug/mL as determined by microplate BCA method.

**Preparation** Recombinant protein was captured through anti-DDK affinity column followed by conventional chromatography steps.

**Protein Families** Druggable Genome

**Protein Pathways** Histidine metabolism, Metabolic pathways

**Full Length** Full L.

## GENE INFORMATION

**Gene Name** [HDC histidine decarboxylase \[ Homo sapiens \(human\) \]](#)

**Official Symbol** [HDC](#)

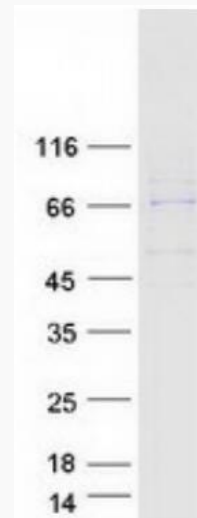
**Synonyms** MGC163399

 Tel: 1-631-559-9269 1-516-512-3133

 Email: [info@creative-biomart.com](mailto:info@creative-biomart.com)  Fax: 1-631-938-8127

 45-1 Ramsey Road, Shirley, NY 11967, USA

Gene ID	3067
mRNA Refseq	NM_002112.4
Protein Refseq	NP_002103.2
MIM	142704
UniProt ID	P19113



Coomassie blue staining of purified HDC protein.

Tel: 1-631-559-9269 1-516-512-3133

Email: [info@creative-biomart.com](mailto:info@creative-biomart.com) Fax: 1-631-938-8127

45-1 Ramsey Road, Shirley, NY 11967, USA