

## Recombinant Human HDDC2 Protein, GST-tagged

Cat. No. HDDC2-4656H Lot. No. (See product label)

### SPECIFICATION

<b>Product Overview</b>	Human HDDC2 full-length ORF ( AAH66332.1, 1 a.a. - 204 a.a.) recombinant protein with GST-tag at N-terminal.
<b>Species</b>	Human
<b>Source</b>	Wheat Germ
<b>Description</b>	HDDC2 (HD Domain Containing 2) is a Protein Coding gene.
<b>Molecular Mass</b>	49.8 kDa
<b>AA Sequence</b>	MASVSSATFSGHGARSLLQLFLRLVGQLKRVPRGTGWVYRNVQRPEVSDHMYRMA VMAMVIKDDRLNKDRCVRLALVHDMAECIVGDIAPADNIPKEEKHRREEEAMKQITQ LLPEDLRKELYELWEEYETRSSAEAKFVKQLDQCCEMILQASEYEDLEHKPGRLQDFY DSTAGKFNHPEIVQLVSELEAERSTNIAAAAASEPHS
<b>Applications</b>	Enzyme-linked Immunoabsorbent Assay Western Blot (Recombinant protein) Antibody Production Protein Array
<b>Notes</b>	Best use within three months from the date of receipt of this protein.
<b>Storage</b>	Store at -8 centigrade. Aliquot to avoid repeated freezing and thawing.

 Tel: 1-631-559-9269 1-516-512-3133

 Email: [info@creative-biomart.com](mailto:info@creative-biomart.com)  Fax: 1-631-938-8127

 45-1 Ramsey Road, Shirley, NY 11967, USA

**Storage Buffer** 50 mM Tris-HCl, 10 mM reduced Glutathione, pH=8.0 in the elution buffer.

## GENE INFORMATION

**Gene Name** HDDC2 HD domain containing 2 [ Homo sapiens ]

**Official Symbol** HDDC2

**Synonyms** C6orf74; CGI-130; NS5ATP2; dJ167O5.2

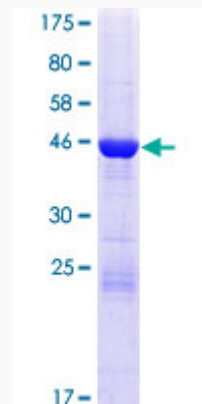
**Gene ID** 51020

**mRNA Refseq** NM\_016063

**Protein Refseq** NP\_057147

**UniProt ID** Q7Z4H3

**Quality Control Testing**



12.5% SDS-PAGE Stained with Coomassie Blue.

 Tel: 1-631-559-9269 1-516-512-3133

 Email: [info@creative-biomart.com](mailto:info@creative-biomart.com)  Fax: 1-631-938-8127

 45-1 Ramsey Road, Shirley, NY 11967, USA