

Recombinant Human HDGF Protein (Met1-Leu240), C-His tagged, Animal-free, Carrier-free

Cat. No. HDGF-139H Lot. No. (See product label)

SPECIFICATION

Product Overview	Recombinant Human HDGF Protein (Met1-Leu240) with C-His tag was expressed in E. coli and Animal-free as well as Carrier-free.
Species	Human
Source	E.coli
ProteinLength	Met1-Leu240
Description	Heparin binding Growth Factors (HDGF) is a 27.60 kDa hepatoma-derived Growth Factors with 246 amino acid residues. HDGF is expressed from mitochondria and proteasome. Functionally, it is a potent mitogen, stimulating the growth of vascular smooth muscle cells, hepatoma cells and endothelial cells, acting as a transcriptional repressor.
Form	Lyophilized
Molecular Mass	The protein has a calculated MW of 27.60 kDa. The protein migrates as 45 kDa under reducing condition (SDS-PAGE analysis).
Endotoxin	< 0.1 EU/μg of the protein by the LAL method.
Purity	>98% as determined by SDS-PAGE analysis.

 Tel: 1-631-559-9269 1-516-512-3133

 Email: info@creative-biomart.com  Fax: 1-631-938-8127

 45-1 Ramsey Road, Shirley, NY 11967, USA



Storage	This product is stable after storage at: -20 centigrade for 12 months in lyophilized state from date of receipt. -20 or -80 centigrade for 1 month under sterile conditions after reconstitution. Avoid repeated freeze/thaw cycles.
Storage Buffer	Lyophilized from a 0.2 µm filtered solution of PBS, pH 7.4.
Reconstitution	It is recommended to reconstitute the lyophilized protein in sterile H2O to a concentration not less than 200 µg/mL and incubate the stock solution for at least 20 min to ensure sufficient re-dissolved.
Shipping	The product is shipped with polar packs. Upon receipt, store it immediately at -20 centigrade or lower for long term storage.

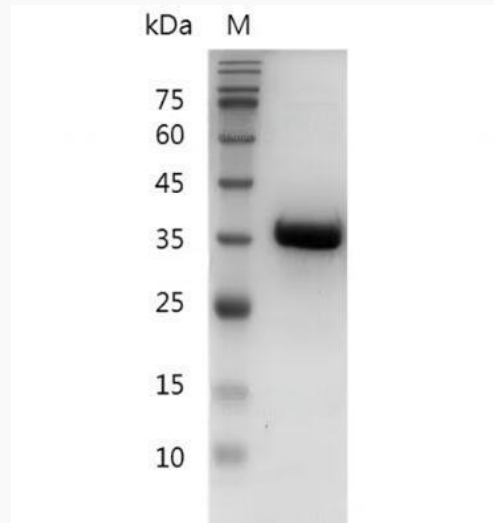
GENE INFORMATION

Gene Name	HDGF hepatoma-derived growth factor [Homo sapiens (human)]
Official Symbol	HDGF
Synonyms	HDGF; hepatoma-derived growth factor; hepatoma derived growth factor (high mobility group protein 1 like); high mobility group protein 1 like; HMG1L2; HMG-1L2; high mobility group protein 1-like 2; FLJ96580; DKFZp686J1764;
Gene ID	3068
mRNA Refseq	NM_001126050
Protein Refseq	NP_001119522
MIM	600339

UniProt ID

P51858

**SDS-PAGE analysis
of recombinant
human HDGF.**



 Tel: 1-631-559-9269 1-516-512-3133

 Email: info@creative-biomart.com  Fax: 1-631-938-8127

 45-1 Ramsey Road, Shirley, NY 11967, USA