

Recombinant Human HDGF Protein, GST-tagged

Cat. No. HDGF-4658H **Lot. No.** (See product label)

SPECIFICATION

Product Overview	Human HDGF full-length ORF (NP_004485.1, 1 a.a. - 240 a.a.) recombinant protein with GST-tag at N-terminal.
Species	Human
Source	Wheat Germ
Description	This gene encodes a member of the hepatoma-derived growth factor family. The encoded protein has mitogenic and DNA-binding activity and may play a role in cellular proliferation and differentiation. This gene was thought initially to be located on chromosome X, however, that location has been determined to correspond to a related pseudogene. Alternatively spliced transcript variants encoding distinct isoforms have been described. [provided by RefSeq]
Molecular Mass	53.2 kDa
AA Sequence	MSRSNRQKEYKCGDLVFAKMKGYPHWPARIDEMPEAAVKSTANKYQVFFFGTHET AFLGPKDLFPYEEESKEKFGKPNKRKGFSEGLWEIENNPTVKASGYQSSQKKSCVEE PEPEPEAAEGDGDKKGNAEGSSDEEGKLVIDEPAKEKNEKGALKRRAGDLLDSPK RPKEAENPEGEEKEAATLEVERPLPMEVEKNSTPSEPGSGRGPPQEEEEEEDEEE EATKEDAEAPGIRDHESL
Applications	Enzyme-linked Immunoabsorbent Assay Western Blot (Recombinant protein) Antibody Production

 Tel: 1-631-559-9269 1-516-512-3133

 Email: info@creative-biomart.com  Fax: 1-631-938-8127

 45-1 Ramsey Road, Shirley, NY 11967, USA

Protein Array

Notes	Best use within three months from the date of receipt of this protein.
Storage	Store at -8 centigrade. Aliquot to avoid repeated freezing and thawing.
Storage Buffer	50 mM Tris-HCl, 10 mM reduced Glutathione, pH=8.0 in the elution buffer.

GENE INFORMATION

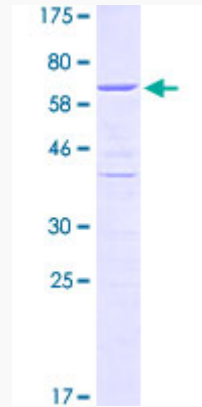
Gene Name	HDGF hepatoma-derived growth factor [Homo sapiens]
Official Symbol	HDGF
Synonyms	HDGF; hepatoma-derived growth factor; hepatoma derived growth factor (high mobility group protein 1 like); high mobility group protein 1 like; HMG1L2; HMG-1L2; high mobility group protein 1-like 2; FLJ96580; DKFZp686J1764;
Gene ID	3068
mRNA Refseq	NM_001126050
Protein Refseq	NP_001119522
MIM	600339
UniProt ID	P51858

 Tel: 1-631-559-9269 1-516-512-3133

 Email: info@creative-biomart.com  Fax: 1-631-938-8127

 45-1 Ramsey Road, Shirley, NY 11967, USA

**Quality Control
Testing**



12.5% SDS-PAGE Stained with Coomassie Blue.

 Tel: 1-631-559-9269 1-516-512-3133

 Email: info@creative-biomart.com  Fax: 1-631-938-8127

 45-1 Ramsey Road, Shirley, NY 11967, USA