

## Recombinant Human HDX Protein, GST-tagged

**Cat. No.** HDX-4666H    **Lot. No.** (See product label)

### SPECIFICATION

**Product Overview**      Human HDX full-length ORF ( NP\_653258.2, 1 a.a. - 690 a.a.) recombinant protein with GST-tag at N-terminal.

**Species**                      Human

**Source**                        Wheat Germ

**Description**                HDX (Highly Divergent Homeobox) is a Protein Coding gene.

**Molecular Mass**            103.6 kDa

**AA Sequence**

```
MNLRSVFTVEQQRILQRYYENGMTNQSKNCFQLILQCAQETKLD FSVVRTWVGNKR
RKMSSKNSESGTATTGTSL SAPDITVRNVVNIARPSSQSSWTSANNDVIVTGIYSP
ASSSSRQGTNKHTDTQITEAHKIPIQKTATKNDTEFQLHIPVQRQVAHCKNASLLLGE
KTIILSRQTSVLNAGNSVFNHAKKNYGNSSVQASEMTVPQKPSVCHR PCKIEPVGIQ
RSYKPEHTGPALHNLCGQKPTIRD PYCRTQNLEIREVFLAVSDYPQRILGGNAPQK
PSSAEGNCLSIAMETGDAEDEYAREEELASMRAQIPSYSRFYESGSSLRAENQSTTL
PGPGRNMPNSQMVNIRDMSDNVLYQNRNYHLTPRTSLHTASSTMYSNTNPLRSNF
SPHFASSNQLRLSQNQNNYQISGNLTPWITGCSRKRALQDR TQFSDRDLATLKKY
WDNGMTSLGVS CREKIEAVATELNVDCEIVRTWIGNRRRKYRLMGIEVPPPRGGPA
DFSEQPESGSL SALT PGEEAGPEVGEDNDRNDEV SICLSEGSSQE EPNEVVPNDAR
AHKEEDHHA VTTDNVKIEIIDDEESDMISNSEVEQVNSFLDYKNEEVKFIENELEIQKQ
KYFKLQTFVRS LILAMKADDKEQQQALLSDLPPELEEMDFNHASLEPDDTSF SVSSL
SEKNVSESL
```

 Tel: 1-631-559-9269    1-516-512-3133

 Email: [info@creative-biomart.com](mailto:info@creative-biomart.com)     Fax: 1-631-938-8127

 45-1 Ramsey Road, Shirley, NY 11967, USA



<b>Applications</b>	Enzyme-linked Immunoabsorbent Assay Western Blot (Recombinant protein) Antibody Production Protein Array
<b>Notes</b>	Best use within three months from the date of receipt of this protein.
<b>Storage</b>	Store at -8 centigrade. Aliquot to avoid repeated freezing and thawing.
<b>Storage Buffer</b>	50 mM Tris-HCl, 10 mM reduced Glutathione, pH=8.0 in the elution buffer.

## GENE INFORMATION

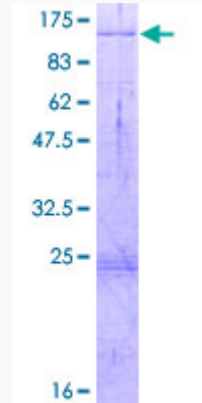
<b>Gene Name</b>	HDX highly divergent homeobox [ Homo sapiens ]
<b>Official Symbol</b>	HDX
<b>Synonyms</b>	HDX; highly divergent homeobox; chromosome X open reading frame 43 , CXorf43; FLJ30678; CXorf43; D030011N01Rik; MGC126769; MGC126771;
<b>Gene ID</b>	139324
<b>mRNA Refseq</b>	NM_001177478
<b>Protein Refseq</b>	NP_001170949
<b>UniProt ID</b>	Q7Z353

Tel: 1-631-559-9269 1-516-512-3133

Email: [info@creative-biomart.com](mailto:info@creative-biomart.com) Fax: 1-631-938-8127

45-1 Ramsey Road, Shirley, NY 11967, USA

**Quality Control  
Testing**



12.5% SDS-PAGE Stained with Coomassie Blue.

 Tel: 1-631-559-9269 1-516-512-3133

 Email: [info@creative-biomart.com](mailto:info@creative-biomart.com)  Fax: 1-631-938-8127

 45-1 Ramsey Road, Shirley, NY 11967, USA