

Recombinant Full Length Human HEATR6 Protein, C-Flag-tagged

Cat. No. HEATR6-1279HFL Lot. No. (See product label)

SPECIFICATION

| | |
|-------------------------|--|
| Product Overview | Recombinant Full Length Human HEATR6 Protein, fused to Flag-tag at C-terminus, was expressed in Mammalian cells. |
| Species | Human |
| Source | Mammalian Cells |
| Description | Enables RNA binding activity. |
| Form | 25 mM Tris HCl, pH 7.3, 100 mM glycine, 10% glycerol. |
| Molecular Mass | 128.6 kDa |
| AA Sequence | <p>MAAVQVVGSWPSVQPREAPREAI PERGNGFRLLSARL CALRPDDSSSARTEIHL LF DQLISENYSEGSGV APEDVSALLVQACRLVPLNQNH LVSKVSQLIHLLNRLQVIVD EQHLD FLLAYTISAIHQCSSWTHREIL QALAALVYCNGSKCQKYLPELLGNTGLLMKL SDLAQSDPEVRRRAAVHCMANLCLSVPGQPYLEEPYQNVCFQAFLTILQSPKSSDM DDITFCMLLQNALKGIQSLNNGGRMKLTQTDELGALLAVLKKFMFHGLPGLNIE MPT VLYPTPLPQYDGRTPIKPQQSESSASRPTLNKKKSKVKPKKIQQGEEEEKESSGEI EAAPVTGTGR VNLHEGNTWCPSSLGVQSLPLDGSGAAEKDGVSSSFSSSSWKRV SSSEDFSDAEGGMQSKMRSYQAKVR QGALVCFLSTIKSIEKKVLYGYWSAFIPDT PELGSPQSVSLMTLTLKDPSPKTRACALQVLSAILEGSKQ FLSVAEDTSDHRRAFP FSVMIACSIRELHRCLLLALVAESSQTVTQIIKCLANLVS NAPYDRLKLSLL TKVWNQ IKPYIRHKDVNVRVSSLTLLGAIVSTHAPLPEVQLLLQQPCSSGLGNSNSATPHLSPP</p> |

 Tel: 1-631-559-9269 1-516-512-3133

 Email: info@creative-biomart.com  Fax: 1-631-938-8127

 45-1 Ramsey Road, Shirley, NY 11967, USA

DWWKKA PAGPSLEETSVSSPKGSSEPCWLIRLCISIVVLPKEDSCSGSDAGSAAGS
 TYEPSPMRLEALQVLTLLAR GYFSMTQAYLMELGEVICKCMGEADPSIQLHGAKLLE
 ELGTGLIQQYKPDSTAAPDQRAPVFLVVMFWM MLNGPLPRALQNSEHPTLQASA
 CDALSSILPEAFSNLPNDRQMLCITVLLGLNDSKNRLVKAATSRALGV YVLFPCLRQ
 DVIFVADAANILMSLEDKSLNVRAKAAWSLGNLDTLIVNMETPDPSFQEEFSGLLL
 LKM LRSAIEASKDKDKVKSNAVRALGNLLHFLQPSHIEKPTFAEIIIESIQALISTVLTE
 AAMKVRWNACYAM GNVFKNPALPLGTAPWTSQAYNALTSVVTSCKNFKVRIRSA
 ALSVPGKREQYGSVDQYARIWNALVTAL QKSEDTIDFLEFKYCVSLRTQICQALIHLL
 SLASASDLPCMKETLELSGNMVQSYILQFLKSGAEGDDTG
 APHSPQERDQMVRMALKHMGSIQAPTGDTARRAIMGFLEEILAVCFDSSSGSQGALP
 GLTNQTRTRPLEQKLISEEDLAANDILDYKDDDDKV

Purity > 80% as determined by SDS-PAGE and Coomassie blue staining.

Stability Stable for 12 months from the date of receipt of the product under proper storage and handling conditions. Avoid repeated freeze-thaw cycles.

Storage Store at -80 centigrade.

Concentration >50 ug/mL as determined by microplate BCA method.

Preparation Recombinant protein was captured through anti-DDK affinity column followed by conventional chromatography steps.

Full Length Full L.

GENE INFORMATION

Gene Name HEATR6 HEAT repeat containing 6 [Homo sapiens (human)]

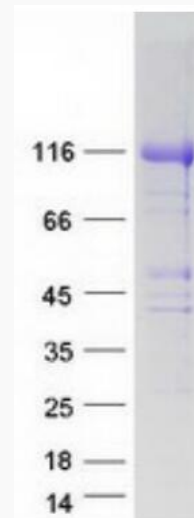
Official Symbol HEATR6

 Tel: 1-631-559-9269 1-516-512-3133

 Email: info@creative-biomart.com  Fax: 1-631-938-8127

 45-1 Ramsey Road, Shirley, NY 11967, USA

| | |
|-----------------------|-------------|
| Synonyms | ABC1 |
| Gene ID | 63897 |
| mRNA Refseq | NM_022070.5 |
| Protein Refseq | NP_071353.4 |
| UniProt ID | Q6AI08 |



Coomassie blue staining of purified HEATR6 protein.

 Tel: 1-631-559-9269 1-516-512-3133

 Email: info@creative-biomart.com  Fax: 1-631-938-8127

 45-1 Ramsey Road, Shirley, NY 11967, USA