

Recombinant Human HECTD3 Protein, GST-tagged

Cat. No. HECTD3-4679H Lot. No. (See product label)

SPECIFICATION

Product Overview	Human HECTD3 full-length ORF (AAH19105.1, 1 a.a. - 210 a.a.) recombinant protein with GST-tag at N-terminal.
Species	Human
Source	Wheat Germ
Description	The protein encoded by this gene transfers ubiquitin from an E2 ubiquitin-conjugating enzyme to targeted substrates, leading to the degradation of those substrates. The encoded protein has been shown to transfer ubiquitin to TRIOBP to facilitate cell cycle progression, and to STX8. [provided by RefSeq, Dec 2012]
Molecular Mass	50.4 kDa
AA Sequence	MEGMDKETFEFKFGKELTFTTVLSDQQVVELIPGGAGIVVGYGDRSRFIQLVQKARL EESKEQVAAMQAGLLKVVPPQAVLDLLTWQELEKKVCGDPEVTVDALRKLTRFEDFE PSDSRVQYFWEALNNFTNEDRSRFLRFVTGRSRLPARIYIYPDKLGYETTDALPESS TCSSTLFLPHYASAKVCEEKLRYYAAYNCVAIDTDMSPWEE
Applications	Enzyme-linked Immunoabsorbent Assay Western Blot (Recombinant protein) Antibody Production Protein Array
Notes	Best use within three months from the date of receipt of this protein.

 Tel: 1-631-559-9269 1-516-512-3133

 Email: info@creative-biomart.com  Fax: 1-631-938-8127

 45-1 Ramsey Road, Shirley, NY 11967, USA

Storage Store at -8 centigrade. Aliquot to avoid repeated freezing and thawing.

Storage Buffer 50 mM Tris-HCl, 10 mM reduced Glutathione, pH=8.0 in the elution buffer.

GENE INFORMATION

Gene Name HECTD3 HECT domain containing E3 ubiquitin protein ligase 3 [Homo sapiens]

Official Symbol HECTD3

Synonyms

HECTD3; HECT domain containing E3 ubiquitin protein ligase 3; HECT domain containing 3; E3 ubiquitin-protein ligase HECTD3; FLJ21156; HECT domain-containing protein 3; probable E3 ubiquitin-protein ligase HECTD3; RP11-69J16.1; FLJ31983; MGC161630;

Gene ID 79654

mRNA Refseq NM_024602

Protein Refseq NP_078878

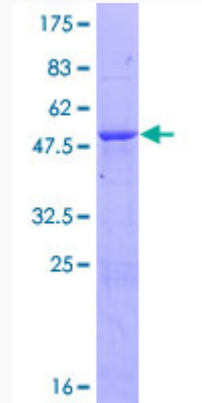
UniProt ID Q5T447

 Tel: 1-631-559-9269 1-516-512-3133

 Email: info@creative-biomart.com  Fax: 1-631-938-8127

 45-1 Ramsey Road, Shirley, NY 11967, USA

**Quality Control
Testing**



12.5% SDS-PAGE Stained with Coomassie Blue.

 Tel: 1-631-559-9269 1-516-512-3133

 Email: info@creative-biomart.com  Fax: 1-631-938-8127

 45-1 Ramsey Road, Shirley, NY 11967, USA