

Recombinant Human HECW2 Protein, Myc/DDK-tagged, C13 and N15-labeled

Cat. No. HECW2-4599H **Lot. No.** (See product label)

SPECIFICATION

Product Overview	HECW2 MS Standard C13 and N15-labeled recombinant protein (NP_065811) with a C-terminal MYC/DDK tag, was expressed in HEK293 cells.
Species	Human
Source	HEK293
Description	<p>This gene encodes a member of a family of E3 ubiquitin ligases which plays an important role in the proliferation, migration and differentiation of neural crest cells as a regulator of glial cell line-derived neurotrophic factor (GDNF)/Ret signaling. This gene also plays an important role in angiogenesis through stabilization of endothelial cell-to-cell junctions as a regulator of angiomin-like 1 stability. The encoded protein contains an N-terminal calcium/lipid-binding (C2) domain involved in membrane targeting, two-four WW domains responsible for cellular localization and substrate recognition, and a C-terminal homologous with E6-associated protein C-terminus (HECT) catalytic domain. Naturally occurring mutations in this gene are associated with neurodevelopmental delay, hypotonia, and epilepsy. The decreased expression of this gene in the aganglionic colon is associated with Hirschsprung's disease. Alternative splicing results in multiple transcript variants.</p>
Molecular Mass	175.6 kDa
AA Sequence	MASSAREHLLFVRRRRNPQMRYTLSPENLQSLAAQSSMPENMTLQRANSDTDLVTS

 Tel: 1-631-559-9269 1-516-512-3133

 Email: info@creative-biomart.com  Fax: 1-631-938-8127

 45-1 Ramsey Road, Shirley, NY 11967, USA

ESRSSLTASMYEYTLGQAQNLIIWFWDIKEEVDPSPDWIGLYHIDENSPANFWDSKNRG
VTGTQKQGQIVWRIEPPGYFMEPEIKICFKYYHGISGALRATTPCITVKNPAVMMGAEG
MEGGASGNLHSRKLVSFTLSDLRAVGLKKGMMFFNPDPYLMKMSIQPGKKSSFPTCAH
HGQERRSTIISNTTNPWIHREKYSFFALLTDVLEIEIKDKFAKSRPIIKRFLGKLTIPVQR
LLERQAIGDQMLSYNLGRRLPADHVSGYLQFKVEVTSSVHEDASPEAVGTILGVNSV
NGDLGSPSDEEDMPGSHHDSQVCSNGPVSEDSAADGTPKHSFRTSSTLEIDTEELT
STSSRTSPPRGRQDSLNDYLDIAIEHNGHSRPGTATCSERSMGASPKLRSSFPTDTR
LNAMLHIDSDEEDHEFQQDLGYPSSLEEEEGGLIMFSRASRADDGSLTSQTKLEDNP
VENEASTHEAASFEDKPENLPELAESSLPAGPAPEEGEGGPEPQPSADQGSALC
GSQEVDPQTSADTGTSDASGGSRRAVSETESLDQGSEPSQVSSETEPSDPARTE
SVSEASTRPEGESDLECADSSCNESVTTQLSSVDTRCSSLESARFPETPAFSSQEE
EDGACAAEPTSSGPAEGSQESVCTAGSLPVVQVPSGEDEGPGAESATVPDQEELG
EVWQRRGSLEGAAAAAESPPQEESGAGEAAGTCEGATAQEEGATGGSQANGHQ
PLRSLPSVRQDVSRVDEALPPNWEARIDSHGRIFYVDHVNRTTTWQRPTAPPA
PQVLQRSNSIQQMEQLNRRYQSIRRTMTNERPEENTNAIDGAGEEADFHQASADFR
RENILPHSTSRSRITLLLQSPPVKFLISPEFFTVLHSNPSAYRMFTNNTCLKHMITKVR
RDTHHFERYQHNRDLVGFLNMFANKQLELPRGWEMKHDHQGKAFFVDHNSRTTTF
IDPRLPLQSSRPTSALVHRQHLTRQRSHSAGEVGEDSRHAGPPVLRPSSTFNTVS
RPQYQDMVPVAYNDKIVAFLRQPNIFEILQERQPDLTRNHSLREKIQFIRTEGTPGLV
RLSSDADLVMLLSLFEIEIMSYPHALLHPSYCQSPRGSPVSSPQNSPGTQRANA
RAPAPYKRDFAKLRNFYRKLETKGYGQGPGLKLIIRRDHLLDFAFNQIMGYSRKD
LQRNKLYVTFVGEGLDYSGPSREFFFLVSRELFNPYYGLFEYSANDTYTVQISPMS
AFVDNHHEWFRFSGRILGLALIHQYLLDAFFTRPFYKALLRILCDLSDLEYLDEEFHQ
SLQWMKDNDIHDILDLTFTVNEEVFGQITERELKPGGANIPVTEKNKKEYIERMVKW
RIERG VVQQTESLVRGFYEVDARLVSVFDARELELVIAGTAEIDLSDWRNNTTEYRG
GYHDNHIVIRWFWAVERFNNEQRLRLQLFVTGTSSIPYEGFASLRGSGNGPRRFCV
EKWGKITALPRAHTCFNRLDLPPYPSFSMLYEKLLTAVEETSTFGLETRTRPLEQKLI
SEEDLAANDILDYKDDDDKV

Purity

> 80% as determined by SDS-PAGE and Coomassie blue staining

 Tel: 1-631-559-9269 1-516-512-3133 Email: info@creative-biomart.com  Fax: 1-631-938-8127 45-1 Ramsey Road, Shirley, NY 11967, USA

Stability	Stable for 3 months from receipt of products under proper storage and handling conditions.
Storage	Store at -80 centigrade. Avoid repeated freeze-thaw cycles.
Concentration	50 µg/mL as determined by BCA
Storage Buffer	100 mM glycine, 25 mM Tris-HCl, pH 7.3.

GENE INFORMATION

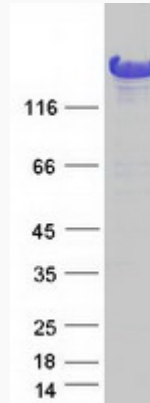
Gene Name	HECW2 HECT, C2 and WW domain containing E3 ubiquitin protein ligase 2 [Homo sapiens (human)]
Official Symbol	HECW2
Synonyms	HECW2; HECT, C2 and WW domain containing E3 ubiquitin protein ligase 2; E3 ubiquitin-protein ligase HECW2; KIAA1301; NEDL2; NEDD4-related E3 ubiquitin ligase NEDL2; NEDD4-like E3 ubiquitin-protein ligase 2; HECT, C2 and WW domain-containing protein 2; DKFZp686M17164;
Gene ID	57520
mRNA Refseq	NM_020760
Protein Refseq	NP_065811
MIM	617245
UniProt ID	Q9P2P5

 Tel: 1-631-559-9269 1-516-512-3133

 Email: info@creative-biomart.com  Fax: 1-631-938-8127

 45-1 Ramsey Road, Shirley, NY 11967, USA

SDS-PAGE



 Tel: 1-631-559-9269 1-516-512-3133

 Email: info@creative-biomart.com  Fax: 1-631-938-8127

 45-1 Ramsey Road, Shirley, NY 11967, USA