

Recombinant Human HECW2 Protein, GST-tagged

Cat. No. HECW2-4680H **Lot. No.** (See product label)

SPECIFICATION

Product Overview	Human HECW2 partial ORF (NP_065811, 637 a.a. - 745 a.a.) recombinant protein with GST-tag at N-terminal.
Species	Human
Source	Wheat Germ
Description	<p>This gene encodes a member of a family of E3 ubiquitin ligases which plays an important role in the proliferation, migration and differentiation of neural crest cells as a regulator of glial cell line-derived neurotrophic factor (GDNF)/Ret signaling. This gene also plays an important role in angiogenesis through stabilization of endothelial cell-to-cell junctions as a regulator of angiomin-1 stability. The encoded protein contains an N-terminal calcium/lipid-binding (C2) domain involved in membrane targeting, two-four WW domains responsible for cellular localization and substrate recognition, and a C-terminal homologous with E6-associated protein C-terminus (HECT) catalytic domain. Naturally occurring mutations in this gene are associated with neurodevelopmental delay, hypotonia, and epilepsy. The decreased expression of this gene in the aganglionic colon is associated with Hirschsprung's disease. Alternative splicing results in multiple transcript variants. [provided by RefSeq, Feb 2017]</p>
Molecular Mass	37.73 kDa
AA Sequence	DLECADSSCNESVTTQLSSVDTRCSSLESARFPETPAFSSQEEEDGACAAEPTSSG

 Tel: 1-631-559-9269 1-516-512-3133

 Email: info@creative-biomart.com  Fax: 1-631-938-8127

 45-1 Ramsey Road, Shirley, NY 11967, USA

PAEGSQESVCTAGSLPVVQVPSGEDEGPGAESATVPDQEELGEVWQRRGSLEG

Applications

Enzyme-linked Immunoabsorbent Assay
 Western Blot (Recombinant protein)
 Antibody Production
 Protein Array

Notes

Best use within three months from the date of receipt of this protein.

Storage

Store at -8 centigrade. Aliquot to avoid repeated freezing and thawing.

Storage Buffer

50 mM Tris-HCl, 10 mM reduced Glutathione, pH=8.0 in the elution buffer.

GENE INFORMATION

Gene Name

[HECW2 HECT, C2 and WW domain containing E3 ubiquitin protein ligase 2 \[Homo sapiens \]](#)

Official Symbol

[HECW2](#)

Synonyms

HECW2; HECT, C2 and WW domain containing E3 ubiquitin protein ligase 2; E3 ubiquitin-protein ligase HECW2; KIAA1301; NEDL2; NEDD4-related E3 ubiquitin ligase NEDL2; NEDD4-like E3 ubiquitin-protein ligase 2; HECT, C2 and WW domain-containing protein 2; DKFZp686M17164;

Gene ID

[57520](#)

mRNA Refseq

[NM_020760](#)

Protein Refseq

[NP_065811](#)

 Tel: 1-631-559-9269 1-516-512-3133

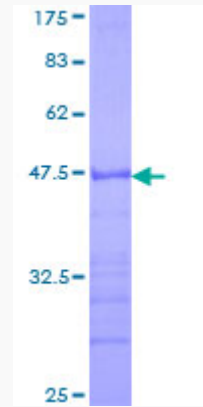
 Email: info@creative-biomart.com  Fax: 1-631-938-8127

 45-1 Ramsey Road, Shirley, NY 11967, USA

UniProt ID

Q9P2P5

Quality Control
Testing



12.5% SDS-PAGE Stained with Coomassie Blue.

 Tel: 1-631-559-9269 1-516-512-3133

 Email: info@creative-biomart.com  Fax: 1-631-938-8127

 45-1 Ramsey Road, Shirley, NY 11967, USA