

# Recombinant Human HELB Protein, Myc/DDK-tagged, C13 and N15-labeled

**Cat. No.** HELB-527H    **Lot. No.** (See product label)

## SPECIFICATION

<b>Product Overview</b>	HELB MS Standard C13 and N15-labeled recombinant protein (NP_387467) with a C-terminal MYC/DDK tag, was expressed in HEK293 cells.
<b>Species</b>	Human
<b>Source</b>	HEK293
<b>Description</b>	This gene encodes a DNA-dependent ATPase which catalyzes the unwinding of DNA necessary for DNA replication, repair, recombination, and transcription. This gene is thought to function specifically during the S phase entry of the cell cycle. Alternative splicing results in multiple transcript variants.
<b>Molecular Mass</b>	123.1 kDa
<b>AA Sequence</b>	MARSSPYLRQLQGPLLPPRDLVEEDDDYLNDDVEEDEESVFIDAEELCSGGVKAGS LPGCLRVSICDENTQETCKVFGRFPITGAWWRVKVQVKPVVGSRSYQYQVQGFP YFLQSDMSPPNQKHICALFLKECEVSSDDVNKFLTWWKEVSNYKNLNFENLRETLRT FHKETGRKDQKQPTQNGQEELFLDNEMSLPLENTIPFRNVMTALQFPKIMEFLPVLL PRHFKWIIIGSGSKEMLKEIEEILGTHPWKLGFSKITYREWKLLRCEASWIAFCQCESL LQLMTDLEKNALIMYSRLKQICREDGHTYVEVNDLTLTSLNHMSFHAASESLKFLKDI GVVTYEKSCVFPYDLYHAERIAAFSICDLMKKPPWHLCVDVEKVLASIHTTKPENSSD DALNESKPDEVRLNPVDVVDVTQDNGDHIWTNGENEINAEISEVQLDQDQVEVPLD RDQVAALEMICSNPVTVISGKGGCGKTTIVSRLFKHIEQLEEREVKKACEDFEQDQN

 Tel: 1-631-559-9269    1-516-512-3133

 Email: [info@creative-biomart.com](mailto:info@creative-biomart.com)     Fax: 1-631-938-8127

 45-1 Ramsey Road, Shirley, NY 11967, USA

ASEEWITFTEQSQLEADKAIEVLLTAPTGKAAGLLRQKTGLHAYTLCQVNYSFYSWT  
 QTMMTTNKPWKFSSVRVLVDEGSLVSVGIFKSVLNLCEHSLKSLKLIILGDIRQLPSI  
 EPGNLLKDLFETLKS RNCAIELKTNHRAESQLIVDNATRISRQFPKFDAELNISDNPT  
 LPISIQDKTFIFVRLPEEDASSQSSKTNHHSCLYSAVKTLQENNLQNAKTSQFIAFR  
 QDCDLINDCCCKHYTGHLTKDHQSRLVFGIGDKICCTRNAYLSDLLPENISGSQQNN  
 DLDASSEDFSGTLPDFAKNKRDFESNVRLCNGEIFFITNDVTDVTFGKRRSLTINMA  
 GLEVTVDFFKLMKYCRIKHAWARTIHTFQGSEEQTVVYVVGKAGRQHWQHVYTAVT  
 RGRRCRVYVIAEESQLRNAIMKNSFPRKTRLKHFLQSKLSSSGAPPADFLSPRKSSGD  
 SGGPSIPSASPLPVVTDHAMTNDVTWSEASSPDERTLTFAERWQLSSPDGVD TDD  
 DLPKSRASKRTCGVNDDESPSKIFMVGESQPQVSSRLQNLRLNLIQRQLFKPTDNQE  
 TTRTRPLEQKLISEEDLAANDILDYKDDDDKV

**Purity** > 80% as determined by SDS-PAGE and Coomassie blue staining

**Stability** Stable for 3 months from receipt of products under proper storage and handling conditions.

**Storage** Store at -80 centigrade. Avoid repeated freeze-thaw cycles.

**Concentration** 50 µg/mL as determined by BCA

**Storage Buffer** 100 mM glycine, 25 mM Tris-HCl, pH 7.3.

## GENE INFORMATION

**Gene Name** HELB DNA helicase B [ Homo sapiens (human) ]

**Official Symbol** HELB

**Synonyms** helicase (DNA) B; 17196; Ensembl:ENSG00000127311; DNA helicase B; helicase B; 3.6.4.12; hDHB

 Tel: 1-631-559-9269 1-516-512-3133

 Email: [info@creative-biomart.com](mailto:info@creative-biomart.com)  Fax: 1-631-938-8127

 45-1 Ramsey Road, Shirley, NY 11967, USA

**Gene ID** 92797

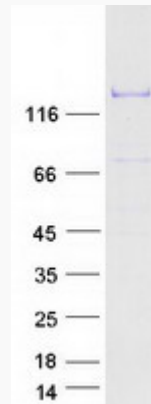
**mRNA Refseq** NM\_033647

**Protein Refseq** NP\_387467

**MIM** 614539

**UniProt ID** Q8NG08

**SDS-PAGE**



 Tel: 1-631-559-9269 1-516-512-3133

 Email: [info@creative-biomart.com](mailto:info@creative-biomart.com)  Fax: 1-631-938-8127

 45-1 Ramsey Road, Shirley, NY 11967, USA