

## Recombinant Human HELLS Protein, GST-tagged

Cat. No. HELLS-4683H Lot. No. (See product label)

### SPECIFICATION

<b>Product Overview</b>	Human HELLS full-length ORF ( AAH30963, 1 a.a. - 348 a.a.) recombinant protein with GST-tag at N-terminal.
<b>Species</b>	Human
<b>Source</b>	Wheat Germ
<b>Description</b>	This gene encodes a lymphoid-specific helicase. Other helicases function in processes involving DNA strand separation, including replication, repair, recombination, and transcription. This protein is thought to be involved with cellular proliferation and may play a role in leukemogenesis. Alternatively spliced transcript variants have been described, but their biological validity has not been determined. [provided by RefSeq]
<b>Molecular Mass</b>	63.8 kDa
<b>AA Sequence</b>	MFGSSEKETIELSPTGRPKRRTRKSINYSKIDDFPNELEKLISQIQPEVDRERAVVEV NIPVESEVNLKLNIMMLLRKCCNHPYLIEYPIDPVTQEFKIDEELVTNSGKFLILDRML PELKKRGHKVLLFSQMTSMLDILMDYCHLRDFNFSRLDGSMSYSEREKNMHSFNTD PEVFIFLVSTRAGGLGINLTAADTVIIYDSDWNPQSDLQAQDRCHRIGQTKPVVVYRL VTANTIDQKIVERAAAKRKLEKLIHKNHFKGGQSGLNLSKNFLDPKELMELLKSRDY EREIKGSREKVISDKDLELLDRSDLIDQMNASGPIKEKMGIFKILENSEDSPECLF
<b>Applications</b>	Enzyme-linked Immunoabsorbent Assay Western Blot (Recombinant protein)

 Tel: 1-631-559-9269 1-516-512-3133

 Email: [info@creative-biomart.com](mailto:info@creative-biomart.com)  Fax: 1-631-938-8127

 45-1 Ramsey Road, Shirley, NY 11967, USA

	Antibody Production Protein Array
<b>Notes</b>	Best use within three months from the date of receipt of this protein.
<b>Storage</b>	Store at -8 centigrade. Aliquot to avoid repeated freezing and thawing.
<b>Storage Buffer</b>	50 mM Tris-HCl, 10 mM reduced Glutathione, pH=8.0 in the elution buffer.
<b>GENE INFORMATION</b>	
<b>Gene Name</b>	HELLS helicase, lymphoid-specific [ Homo sapiens ]
<b>Official Symbol</b>	HELLS
<b>Synonyms</b>	HELLS; helicase, lymphoid-specific; lymphoid-specific helicase; LSH; Nbla10143; PASG; proliferation associated SNF2 like protein; SMARCA6; SWI/SNF2 related; matrix associated; actin dependent regulator of chromatin; subfamily A; member 6; proliferation-associated SNF2-like protein; SWI/SNF2-related matrix-associated actin-dependent regulator of chromatin subfamily A member 6; SWI/SNF2-related, matrix-associated, actin-dependent regulator of chromatin, subfamily A, member 6; FLJ10339;
<b>Gene ID</b>	3070
<b>mRNA Refseq</b>	NM_018063
<b>Protein Refseq</b>	NP_060533
<b>MIM</b>	603946

 Tel: 1-631-559-9269 1-516-512-3133

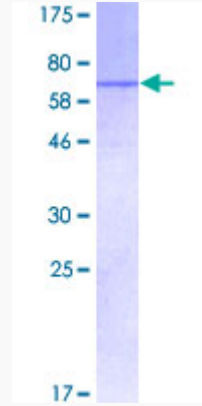
 Email: [info@creative-biomart.com](mailto:info@creative-biomart.com)  Fax: 1-631-938-8127

 45-1 Ramsey Road, Shirley, NY 11967, USA

UniProt ID

Q9NRZ9

Quality Control  
Testing



12.5% SDS-PAGE Stained with Coomassie Blue.

 Tel: 1-631-559-9269 1-516-512-3133

 Email: [info@creative-biomart.com](mailto:info@creative-biomart.com)  Fax: 1-631-938-8127

 45-1 Ramsey Road, Shirley, NY 11967, USA