

Recombinant Human HELT protein, His-tagged

Cat. No. HELT-4322H Lot. No. (See product label)

SPECIFICATION

Product Overview	Recombinant Human HELT protein(54-241 aa), fused with N-terminal His tag, was expressed in E. coli.
Species	Human
Source	E. coli
ProteinLength	54-241 aa
Form	The purified protein was lyophilized from sterile phosphate-buffered saline (PBS: 58 mM Na ₂ HPO ₄ , 17 mM NaH ₂ PO ₄ , 68 mM NaCl, pH 7.4). Prior to lyophilization, 5% (w/v) trehalose and 5% (w/v) mannitol were incorporated as cryoprotective excipients. The protein was eluted with a buffer containing 300 mM imidazole.
AASequence	ILEMTVQYLRLHSADFPGRGKELLAEFANYFHYGYHECMKNLVHYLTTVERMETK DTKYARILAFLLQSKARLGAEPAPFPPLGSLPEPDFSYQLHPAGPEFAGHSPGEAAVFP QGSGAGPFPWPPGAARSPALPYLPSAPVPLASPAQQHSPFLTPVQGLDRHYLNLIG HAHPNALNLHTPQHPPVL
Purity	85%, by SDS-PAGE.
Storage	Store at 2-8°C for 1-2 weeks. Aliquot and store at -20°C to -80°C for up to 3 months, reconstitution with sterile water and addition of an equal volume of glycerol. Avoid repeat freeze-thaw cycles.

 Tel: 1-631-559-9269 1-516-512-3133

 Email: info@creative-biomart.com  Fax: 1-631-938-8127

 45-1 Ramsey Road, Shirley, NY 11967, USA

Reconstitution It is recommended that sterile water be added to the vial to prepare a stock solution of 0.25 ug/ul. Centrifuge the vial at 4°C before opening to recover the entire contents.

GENE INFORMATION

Gene Name [HELT](#) [helt](#) [bHLH transcription factor \[Homo sapiens \]](#)

Official Symbol [HELT](#)

Synonyms [HELT](#); [helt](#) [bHLH transcription factor](#); [HES/HEY like transcription factor](#) , [Hey like transcription factor \(zebrafish\)](#); [hairy and enhancer of split-related protein](#) [HELT](#); [bHLHb44](#); [HCM1228](#); [HES like](#); [HESL](#); [MEGANE](#); [megane bHLH factor](#); [Mgn](#); [Heslike](#); [Megane bHLH factor](#); [Hey-like transcription factor](#); [HES/HEY-like transcription factor](#); [Hey-like transcriptional repressor](#);

mRNA Refseq [NM_001029887](#)

Protein Refseq [NP_001025058](#)

UniProt ID [A6NFD8](#)

Gene ID [391723](#)

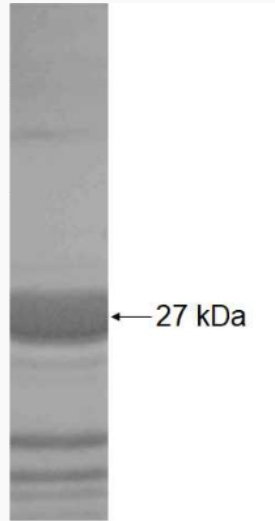
 Tel: 1-631-559-9269 1-516-512-3133

 Email: info@creative-biomart.com  Fax: 1-631-938-8127

 45-1 Ramsey Road, Shirley, NY 11967, USA



SDS-PAGE



☎ Tel: 1-631-559-9269 1-516-512-3133

☎ Email: info@creative-biomart.com ☎ Fax: 1-631-938-8127

☎ 45-1 Ramsey Road, Shirley, NY 11967, USA