

Recombinant Human HENMT1 Protein, MYC/DDK-tagged, C13 and N15-labeled

Cat. No. HENMT1-210H Lot. No. (See product label)

SPECIFICATION

Product Overview	C1orf59 MS Standard C13 and N15-labeled recombinant protein (NP_653185) with a C-terminal MYC/DDK tag, was expressed in HEK293 cells.
Species	Human
Source	HEK293
Description	Methyltransferase that adds a 2'-O-methyl group at the 3'-end of piRNAs, a class of 24 to 30 nucleotide RNAs that are generated by a Dicer-independent mechanism and are primarily derived from transposons and other repeated sequence elements. This probably protects the 3'-end of piRNAs from uridylation activity and subsequent degradation. Stabilization of piRNAs is essential for gametogenesis.
Molecular Mass	44.5 kDa
AA Sequence	MEENNLQCSSVVDGNFEEVPRETAIQFKPPLYRQRYQFVKNLVDQHEPKKVADLGC GDTSLRLLKVNPCIELLVGVDINEDKLRWRGDSLAPFLGDFLKPRDLNLTITLYHGS VVERDSRLLGFDLITCIELIEHLDSGDLARFPEVVFVGYLSPSMIVISTPNSEFNPLFPSV TLRDS DHKFEWTRMEFQ TWALYVANRYDYSVEFTGVGEP PAGAEN VGYCTQIGIFR KNGGKATESCLSEQHDQH VYKAVFTTSYPSLQQERFFKLVLVNEVSQQVESLRVSH LPRRKEQAGERGDKPKDIGGSKAPVPCFGPVFTEVEKAKIENSPTPFCVGDKFFVPL QRLLAYPKLNRLCANEEIMRSVIADSIPLSSDGS AVVADLRNYFDEQFEFTRTRPLEQ KLISEEDLAANDILDYKDDDDKV

Tel: 1-631-559-9269 1-516-512-3133

Email: info@creative-biomart.com Fax: 1-631-938-8127

45-1 Ramsey Road, Shirley, NY 11967, USA

Purity	> 80% as determined by SDS-PAGE and Coomassie blue staining
Stability	Stable for 3 months from receipt of products under proper storage and handling conditions.
Storage	Store at -80 centigrade. Avoid repeated freeze-thaw cycles.
Concentration	50 µg/mL as determined by BCA
Storage Buffer	100 mM glycine, 25 mM Tris-HCl, pH 7.3.

GENE INFORMATION

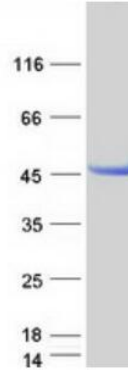
Gene Name	HENMT1 HEN1 methyltransferase homolog 1 (Arabidopsis) [Homo sapiens (human)]
Official Symbol	HENMT1
Synonyms	HEN1; C1orf59; RP11-256E16.2
Gene ID	113802
mRNA Refseq	NM_144584
Protein Refseq	NP_653185
MIM	612178
UniProt ID	Q5T8I9

 Tel: 1-631-559-9269 1-516-512-3133

 Email: info@creative-biomart.com  Fax: 1-631-938-8127

 45-1 Ramsey Road, Shirley, NY 11967, USA

SDS-PAGE



 Tel: 1-631-559-9269 1-516-512-3133

 Email: info@creative-biomart.com  Fax: 1-631-938-8127

 45-1 Ramsey Road, Shirley, NY 11967, USA