

Recombinant Full Length Human HEPACAM Protein, C-Flag-tagged

Cat. No. HEPACAM-169HFL **Lot. No.** (See product label)

SPECIFICATION

Product Overview	Recombinant Full Length Human HEPACAM Protein, fused to Flag-tag at C-terminus, was expressed in Mammalian cells.
Species	Human
Source	Mammalian Cells
Description	The protein encoded by this gene is a single-pass type I membrane protein that localizes to the cytoplasmic side of the cell membrane. The encoded protein acts as a homodimer and is involved in cell motility and cell-matrix interactions. The expression of this gene is downregulated or undetectable in many cancer cell lines, so this may be a tumor suppressor gene.
Form	25 mM Tris HCl, pH 7.3, 100 mM glycine, 10% glycerol.
Molecular Mass	45.8 kDa
AA Sequence	MKRREGALSRSRALRLAPFVYLLLIQTDPLEGVNITSPVRLIHGTVGKSALLSVQYS STSSDRPVVKWQ LKRDKPVTVVQSIGTEVIGTLRPDYRDRIRLFENGSLLLSDLQLA DEGTYEVEISITDDTFTGEKTINLT VDVPISRPQVLVASTTVLELSEAF TLNC SHENGT KPSYTWLKD GKPLLND SRMLLSPDQKVL TITRVLME DDDLYSCVVENPISQGRSLP VKITVYRRSSLYIILSTGGIFLLVTLVTVCACWKPSKRKQKKLEKQNSLE YMDQNDDR LKPEADTLPRSGEQERKNPMALYILKDKDSPETEENPAPEPR SATEPGPPGYSVSP AVPGRS PGLPIRSARRYPRSPARSPATGRTHSSPPRAPSSPGRSRSASRTLRTAG

 Tel: 1-631-559-9269 1-516-512-3133

 Email: info@creative-biomart.com  Fax: 1-631-938-8127

 45-1 Ramsey Road, Shirley, NY 11967, USA

VHIIREQDEAGPVEISATRTRPLEQKLISEEDLAANDILDYKDDDDKV

Purity > 80% as determined by SDS-PAGE and Coomassie blue staining.

Stability Stable for 12 months from the date of receipt of the product under proper storage and handling conditions. Avoid repeated freeze-thaw cycles.

Storage Store at -80 centigrade.

Concentration >50 ug/mL as determined by microplate BCA method.

Preparation Recombinant protein was captured through anti-DDK affinity column followed by conventional chromatography steps.

Protein Families Druggable Genome, Transmembrane

Full Length Full L.

GENE INFORMATION

Gene Name [HEPACAM hepatic and glial cell adhesion molecule \[Homo sapiens \(human\) \]](#)

Official Symbol [HEPACAM](#)

Synonyms HEPN1; MLC2A; MLC2B; GlialCAM

Gene ID [220296](#)

mRNA Refseq [NM_152722.5](#)

Protein Refseq [NP_689935.2](#)

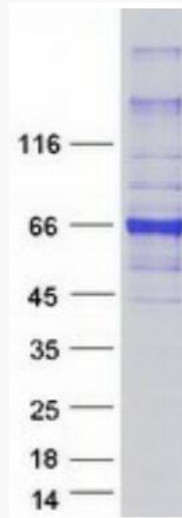
 Tel: 1-631-559-9269 1-516-512-3133

 Email: info@creative-biomart.com  Fax: 1-631-938-8127

 45-1 Ramsey Road, Shirley, NY 11967, USA

MIM 611642

UniProt ID Q14CZ8



Coomassie blue staining of purified HEPACAM protein.

 Tel: 1-631-559-9269 1-516-512-3133

 Email: info@creative-biomart.com  Fax: 1-631-938-8127

 45-1 Ramsey Road, Shirley, NY 11967, USA