

# Recombinant Human HEPACAM Protein, MYC/DDK-tagged, C13 and N15-labeled

Cat. No. HEPACAM-366H Lot. No. (See product label)

## SPECIFICATION

### Product Overview

HEPACAM MS Standard C13 and N15-labeled recombinant protein (NP\_689935) with a C-terminal MYC/DDK tag, was expressed in HEK293 cells.

### Species

Human

### Source

HEK293

### Description

The protein encoded by this gene is a single-pass type I membrane protein that localizes to the cytoplasmic side of the cell membrane. The encoded protein acts as a homodimer and is involved in cell motility and cell-matrix interactions. The expression of this gene is downregulated or undetectable in many cancer cell lines, so this may be a tumor suppressor gene. [provided by RefSeq, Jul 2011]

### Molecular Mass

45.8 kDa

### AA Sequence

MKRREGALSRASRALRLAPFVYLLLIQTDPLEGVNITSPVRLIHGTVGKSALLSVQYS  
 STSSDRPVVKWQLKRDKPVTVVQSIGTEVIGTLRPDYRDRIRLFENGSLLLSDLQLAD  
 EGTYEVEISITDDTFTGEKTINLTVDPISRPQVLVASTTVLELSEAFTLNCSHENGTK  
 PSYTWLKDGGKPLLNDSRMLLSPDQKVLITRVLMEDDDLYSCVVENPISQGRSLPVK  
 ITVYRRSSLYIILSTGGIFLLVTLVTVCACWKPSKRKQKKLEKQNSLEYMDQNDRLK  
 PEADTLPRSGEQERKNPMALYILKDKDSPETEENPAPEPRSAPEPGPPGYSVSPAV  
 PGRSPGLPIRSARRYPRSPARSPATGRTHSSPPRAPSSPGRSRSASRTLRTAGVHII  
 REQDEAGPVEISATRTRPLEQKLISEEDLAANDILDYKDDDDKV

 Tel: 1-631-559-9269 1-516-512-3133

 Email: [info@creative-biomart.com](mailto:info@creative-biomart.com)  Fax: 1-631-938-8127

 45-1 Ramsey Road, Shirley, NY 11967, USA

<b>Purity</b>	> 80% as determined by SDS-PAGE and Coomassie blue staining
<b>Stability</b>	Stable for 3 months from receipt of products under proper storage and handling conditions.
<b>Storage</b>	Store at -80 centigrade. Avoid repeated freeze-thaw cycles.
<b>Concentration</b>	50 µg/mL as determined by BCA
<b>Storage Buffer</b>	100 mM glycine, 25 mM Tris-HCl, pH 7.3.

## GENE INFORMATION

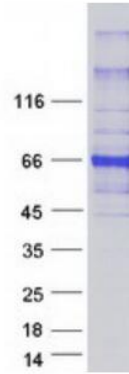
<b>Gene Name</b>	HEPACAM hepatic and glial cell adhesion molecule [ Homo sapiens (human) ]
<b>Official Symbol</b>	HEPACAM
<b>Synonyms</b>	HEPACAM; hepatic and glial cell adhesion molecule; hepatocyte cell adhesion molecule; FLJ25530; glial cell adhesion molecule; GLIALCAM; hepaCAM; protein hepaCAM; MLC2A; MLC2B; GlialCAM;
<b>Gene ID</b>	220296
<b>mRNA Refseq</b>	NM_152722
<b>Protein Refseq</b>	NP_689935
<b>MIM</b>	611642
<b>UniProt ID</b>	Q14CZ8

 Tel: 1-631-559-9269 1-516-512-3133

 Email: [info@creative-biomart.com](mailto:info@creative-biomart.com)  Fax: 1-631-938-8127

 45-1 Ramsey Road, Shirley, NY 11967, USA

**SDS-PAGE**



 Tel: 1-631-559-9269 1-516-512-3133

 Email: [info@creative-biomart.com](mailto:info@creative-biomart.com)  Fax: 1-631-938-8127

 45-1 Ramsey Road, Shirley, NY 11967, USA