

## Recombinant Human HEPH protein, His-tagged

Cat. No. HEPH-1596H Lot. No. (See product label)

### SPECIFICATION

<b>Product Overview</b>	Recombinant Human HEPH aa. (Ala24~Cys366) fused with N-terminal His tag was produced in E. coli cells.
<b>Species</b>	Human
<b>Source</b>	E.coli
<b>ProteinLength</b>	Ala24~Cys366
<b>Description</b>	This gene encodes a member of the multicopper oxidase protein family. The encoded protein is involved in the transport of dietary iron from epithelial cells of the intestinal lumen into the circulatory system, and may be involved in copper transport and homeostasis. In mouse, defects in this gene can lead to severe microcytic anemia. Alternative splicing results in multiple transcript variants.
<b>Form</b>	Freeze-dried powder
<b>Molecular Mass</b>	42kDa as determined by SDS-PAGE reducing conditions.
<b>Endotoxin</b>	<1.0EU per 1ug (determined by the LAL method)
<b>Purity</b>	>95%
<b>Applications</b>	SDS-PAGE; WB; ELISA; IP; CoIP; Purification; Amine Reactive Labeling.

 Tel: 1-631-559-9269 1-516-512-3133

 Email: [info@creative-biomart.com](mailto:info@creative-biomart.com)  Fax: 1-631-938-8127

 45-1 Ramsey Road, Shirley, NY 11967, USA

<b>Stability</b>	The thermal stability is described by the loss rate. The loss rate was determined by accelerated thermal degradation test, that is, incubate the protein at 37°C for 48h, and no obvious degradation and precipitation were observed. The loss rate is less than 5% within the expiration date under appropriate storage condition.
<b>Storage</b>	Avoid repeated freeze/thaw cycles. Store at 2-8°C for one month. Aliquot and store at -80°C for 12 months.
<b>Concentration</b>	200µg/mL
<b>Storage buffer</b>	20mM Tris, 150mM NaCl, pH8.0, containing 1mM EDTA, 1mM DTT, 0.01% sarcosyl, 5%Trehalose and Proclin300.
<b>Reconstitution</b>	Reconstitute in 20mM Tris, 150mM NaCl (pH8.0) to a concentration of 0.1-1.0 mg/mL. Do not vortex.
<b>Isoelectric Point</b>	5.4

## GENE INFORMATION

<b>Gene Name</b>	HEPH hephaestin [ Homo sapiens (human) ]
<b>Official Symbol</b>	HEPH
<b>Synonyms</b>	HEPH; hephaestin; CPL
<b>Gene ID</b>	9843
<b>mRNA Refseq</b>	NM_001130860.3
<b>Protein Refseq</b>	NP_001124332.1

 Tel: 1-631-559-9269 1-516-512-3133

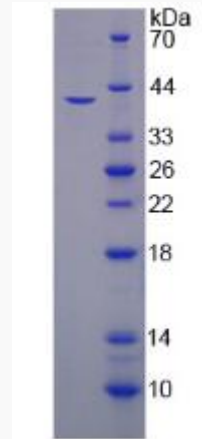
 Email: [info@creative-biomart.com](mailto:info@creative-biomart.com)  Fax: 1-631-938-8127

 45-1 Ramsey Road, Shirley, NY 11967, USA

UniProt ID

Q9BQS7

SDS-PAGE



 Tel: 1-631-559-9269 1-516-512-3133

 Email: [info@creative-biomart.com](mailto:info@creative-biomart.com)  Fax: 1-631-938-8127

 45-1 Ramsey Road, Shirley, NY 11967, USA