

# Recombinant Human HEPH Protein, Myc/DDK-tagged, C13 and N15-labeled

Cat. No. HEPH-1759H Lot. No. (See product label)

## SPECIFICATION

### Product Overview

HEPH MS Standard C13 and N15-labeled recombinant protein (NP\_055614) with a C-terminal MYC/DDK tag, was expressed in HEK293 cells.

### Species

Human

### Source

HEK293

### Description

This gene encodes a member of the multicopper oxidase protein family. The encoded protein is involved in the transport of dietary iron from epithelial cells of the intestinal lumen into the circulatory system, and may be involved in copper transport and homeostasis. In mouse, defects in this gene can lead to severe microcytic anemia. Alternative splicing results in multiple transcript variants.

### Molecular Mass

130.4 kDa

### AA Sequence

MESGHLLWALLFMQSLWPQLTDGATRVYYLGIRDVQWNYAPKGRNVITNQPLDSDI  
 VASSFLKSDKNRIGGTYKKTIIYKEYKDDSYTDEVAQPAWLGFLGPVLQAEVGDVILIH  
 LKNFATRPYTIHPHGVFYEKDSEGLYPDGSSGPKADDSVPPGGSHIYNWTIPEGH  
 APTDADPACLTWIYHSHVDAPRDIATGLIGPLITCKRGALDGNSPQRQDVDHDFLL  
 FSVVDENLSWHLNENIATYCSDPASVDKEDETFQESNRMHAINGFVFGNLPELNMC  
 AQKRVAWHLFGMGNEIDVHTAFFHGQMLTTRGHHTDVANIFPATFVTAEMVPWEP  
 GTWLISCQVNSHFRDGMQALYKVKSCSMAPPVDLLTGKVRQYFIEAHEIQWDYGP  
 GHDGSTGKNLREPGSISDKFFQKSSSRIGGTYWKVRYEAFQDETFQEKMHLEEDR

 Tel: 1-631-559-9269 1-516-512-3133

 Email: [info@creative-biomart.com](mailto:info@creative-biomart.com)  Fax: 1-631-938-8127

 45-1 Ramsey Road, Shirley, NY 11967, USA

HLGILGPVIRAEVGDTIQVVFYNRASQPFSMQPHGVFYEKDYEGTVYNDGSSYPGLV  
 AKPFKVTYRWTVPPHAGPTAQDPACTWMYFSAADPIRDTNSGLVGPLLVCRAGA  
 LGADGKQKGV DKEFFLLFTVL DENKSWYSNANQAAAMLD FRLLEDIEGFQDSNRM  
 HAINGFLFSNLPR LDMCKGDTVAWHLLGLGTETDVHGVVMFQGNTVQLQGMRKGAA  
 MLFPHTFVMAIMQPDNLGTFEICYCAGSHREAGMRAIYNVSQC PGHQATPRQRYQ  
 AARIYYIMAEVEWDYCPDRSWEREWHNQSEKDSYGYIFLSNKDGLLSRYKKAVF  
 REYTDGTFRIPRPTGPEEHLGILGPLIKGEVGDILTVVFKNNASRPYSVHAHGVLES  
 TTWVPLAAEPGEVVTYQWNIPERSGPGPNDSACVSWIYYS AVDPIKDMYSGLVGPL  
 AICQKGILEPHGGRSDMDREFALLFLIFDENKSWYLEENVATHGSQDPGSINLQDET  
 FLESNKMHAINGKLYANLRGLTMYQGERVAWYMLAMGQD VDLHTIHFHAESFLYRN  
 GENYRADVVDLFPGT FEVVEMVASNP GTWLMHCHVTDHVHAGMETLFTVFSRTEH  
 LSPLTVITKETEKAVPPRDIEEGNVKMLGMQIPIKNVEMLASVLVAISV TLLLVLALGG  
 VVWYQHRQRKLRNRRSILDDSFKLLSFKQTRTRPLEQKLISEEDLAANDILDYKDD  
 DDKV

**Purity** > 80% as determined by SDS-PAGE and Coomassie blue staining

**Stability** Stable for 3 months from receipt of products under proper storage and handling conditions.

**Storage** Store at -80 centigrade. Avoid repeated freeze-thaw cycles.

**Concentration** 50 µg/mL as determined by BCA

**Storage Buffer** 100 mM glycine, 25 mM Tris-HCl, pH 7.3.

## GENE INFORMATION

**Gene Name** HEPH hephaestin [ Homo sapiens (human) ]

**Official Symbol** HEPH

 Tel: 1-631-559-9269 1-516-512-3133

 Email: [info@creative-biomart.com](mailto:info@creative-biomart.com)  Fax: 1-631-938-8127

 45-1 Ramsey Road, Shirley, NY 11967, USA

**Synonyms** HEPH; hephaestin; CPL; KIAA0698; hephaestin

**Gene ID** 9843

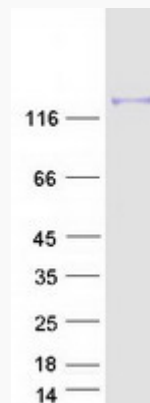
**mRNA Refseq** NM\_014799

**Protein Refseq** NP\_055614

**MIM** 300167

**UniProt ID** Q9BQS7

**SDS-PAGE**



 Tel: 1-631-559-9269 1-516-512-3133

 Email: [info@creative-biomart.com](mailto:info@creative-biomart.com)  Fax: 1-631-938-8127

 45-1 Ramsey Road, Shirley, NY 11967, USA