

Recombinant Human HEPH Protein, Myc/DDK-tagged, C13 and N15-labeled

Cat. No. HEPH-3336H **Lot. No.** (See product label)

SPECIFICATION

| | |
|-------------------------|--|
| Product Overview | HEPH MS Standard C13 and N15-labeled recombinant protein (NP_620074) with a C-terminal MYC/DDK tag, was expressed in HEK293 cells. |
| Species | Human |
| Source | HEK293 |
| Description | This gene encodes a member of the multicopper oxidase protein family. The encoded protein is involved in the transport of dietary iron from epithelial cells of the intestinal lumen into the circulatory system, and may be involved in copper transport and homeostasis. In mouse, defects in this gene can lead to severe microcytic anemia. Alternative splicing results in multiple transcript variants. |
| Molecular Mass | 136.5 kDa |
| AA Sequence | MESGHLLWALLFMQSLWPQLTDGATRVYYLGIRDVQWNYAPKGRNVITNQPLDSDI VASSFLKSDKNRIGGTYKKTIIYKEYKDDSYTDEVAQPAWLGFLGPVLQAEVGDVILIH LKNFATRPYTIHPHGVFYEKDSEGLYPDGSSGPLKADDSVPPGGSHIYNWTIPEGH APTDADPACLTWIYHSHVDAPRDIATGLIGPLITCKRGALDGNSPQRQDVDHDFLL FSVVDENLSWHLNENIATYCSDPASVDKEDETFQESNRMHAINGFVFGNLPENMC AQKRVAWHLFGMGNEIDVHTAFFHGQMLTTRGHHTDVANIFPATFVTAEMVPWEP GTWLISCQVNSHFRDGMQALYKVKSCSMAPPVDLLTGKVRQYFIEAHEIQWDYGPM GHDGSTGKNLREPGSISDKFFQKSSSRIGGTYWKVRYEAFQDETFQEKMHLEEDR |

 Tel: 1-631-559-9269 1-516-512-3133

 Email: info@creative-biomart.com  Fax: 1-631-938-8127

 45-1 Ramsey Road, Shirley, NY 11967, USA

HLGILGPVIRAEVGDTIQVVFYNRASQPFSMQPHGVFYEKDYEGTVYNDGSSYPGLV
 AKPFKVTYRWTVPPHAGPTAQDPACLTWMYFSAADPIRDTNSGLVGPLLVCRAGA
 LGADGKQKGV DKEFFLLFTVL DENKSWYSNANQAAAMLD FRLLEDIEGFQDSNRM
 HAINGFLFSNLPR LDMCKGDTVAWHLLGLGTETDVHGV MFGQNTVQLQGMRKGAA
 MLFPHTFVMAIMQPDNLGTFEICYCAGSHREAGMRAIYNVSQC PGHQATPRQRYQ
 AARIYYIMAEVEWDYCPDRSWEREWHNQSEKDSYGYIFLSNKDGLLGSRYKKAVF
 REYTDGTFRIPRPTGPEEHLGILGPLIKGEVGDILT VVFKNNASRPYSVHAHGVLES
 TTWVPLAAEPGEVVTYQWNIPERSGPGPNDSACVSWIYYS AVDPIKDMYSGLVGPL
 AICQKGILEPHGGRSDMDREFALLFLIFDENKSWYLEENVATHGSQDPGSINLQDET
 FLESNKMHAINGKLYANLRGLTMYQGERVAWYMLAMGQD VDLHTIHFHAESFLYRN
 GENYRADVVDLFPGTFEVVEMVASNPGTWLMHCHVTDH VHAGMETLFTVFSRTEH
 LSPLTVITKETEKAVPPRDIEEGNVKMLGMQIPIKNVEM LASVLVAISVTL LVLALGG
 VVWYQHRQRKLRNRRSILDDSFKLLSFKQTRTRPLEQKLISEEDLAANDILDYKDD
 DDKV

Purity > 80% as determined by SDS-PAGE and Coomassie blue staining

Stability Stable for 3 months from receipt of products under proper storage and handling conditions.

Storage Store at -80 centigrade. Avoid repeated freeze-thaw cycles.

Concentration 50 µg/mL as determined by BCA

Storage Buffer 100 mM glycine, 25 mM Tris-HCl, pH 7.3.

GENE INFORMATION

Gene Name HEPH hephaestin [Homo sapiens (human)]

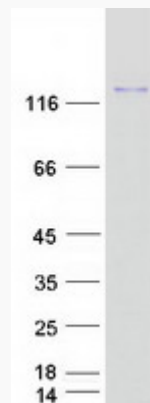
Official Symbol HEPH

 Tel: 1-631-559-9269 1-516-512-3133

 Email: info@creative-biomart.com  Fax: 1-631-938-8127

 45-1 Ramsey Road, Shirley, NY 11967, USA

| | |
|-----------------------|-----------------------------------|
| Synonyms | HEPH; hephaestin; CPL; hephaestin |
| Gene ID | 9843 |
| mRNA Refseq | NM_138737 |
| Protein Refseq | NP_620074 |
| MIM | 300167 |
| UniProt ID | Q9BQS7 |

SDS-PAGE

 Tel: 1-631-559-9269 1-516-512-3133

 Email: info@creative-biomart.com  Fax: 1-631-938-8127

 45-1 Ramsey Road, Shirley, NY 11967, USA