

Recombinant Human HEPH Protein, GST-tagged

Cat. No. HEPH-4689H Lot. No. (See product label)

SPECIFICATION

Product Overview	Human HEPH partial ORF (NP_620074, 315 a.a. - 424 a.a.) recombinant protein with GST-tag at N-terminal.
Species	Human
Source	Wheat Germ
Description	The protein encoded by this gene is similar to an iron transport protein found in mouse. The mouse protein is similar to ceruloplasmin, a serum multi-copper ferroxidase, and is thought to be a membrane-bound protein responsible for transport of dietary iron from epithelial cells of the intestinal lumen into the circulatory system. In mouse, defects in this gene can lead to severe microcytic anemia. Three transcript variants encoding different isoforms have been described for this gene. [provided by RefSeq]
Molecular Mass	37.84 kDa
AA Sequence	TRGHHTDVANIFPATFVTAEMVPWEPGTWLISCQVNSHFRDGMQALYKVKSCSMA PPVDLLTGKVRQYFIEAHEIQWDYGPMGHDGSTGKNLREPGSISDKFFQKSSSRI
Applications	Enzyme-linked Immunoabsorbent Assay Western Blot (Recombinant protein) Antibody Production Protein Array

 Tel: 1-631-559-9269 1-516-512-3133

 Email: info@creative-biomart.com  Fax: 1-631-938-8127

 45-1 Ramsey Road, Shirley, NY 11967, USA

Notes	Best use within three months from the date of receipt of this protein.
Storage	Store at -8 centigrade. Aliquot to avoid repeated freezing and thawing.
Storage Buffer	50 mM Tris-HCl, 10 mM reduced Glutathione, pH=8.0 in the elution buffer.

GENE INFORMATION

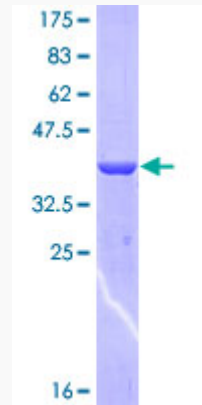
Gene Name	HEPH hephaestin [Homo sapiens]
Official Symbol	HEPH
Synonyms	HEPH; hephaestin; CPL; KIAA0698;
Gene ID	9843
mRNA Refseq	NM_001130860
Protein Refseq	NP_001124332
MIM	300167
UniProt ID	Q9BQS7

 Tel: 1-631-559-9269 1-516-512-3133

 Email: info@creative-biomart.com  Fax: 1-631-938-8127

 45-1 Ramsey Road, Shirley, NY 11967, USA

**Quality Control
Testing**



12.5% SDS-PAGE Stained with Coomassie Blue.

 Tel: 1-631-559-9269 1-516-512-3133

 Email: info@creative-biomart.com  Fax: 1-631-938-8127

 45-1 Ramsey Road, Shirley, NY 11967, USA