

Recombinant Full Length Human HEPH Protein, C-Flag-tagged

Cat. No. HEPH-902HFL Lot. No. (See product label)

SPECIFICATION

Product Overview	Recombinant Full Length Human HEPH Protein, fused to Flag-tag at C-terminus, was expressed in Mammalian cells.
Species	Human
Source	Mammalian Cells
Description	This gene encodes a member of the multicopper oxidase protein family. The encoded protein is involved in the transport of dietary iron from epithelial cells of the intestinal lumen into the circulatory system, and may be involved in copper transport and homeostasis. In mouse, defects in this gene can lead to severe microcytic anemia. Alternative splicing results in multiple transcript variants.
Form	25 mM Tris HCl, pH 7.3, 100 mM glycine, 10% glycerol.
Molecular Mass	136.5 kDa
AA Sequence	MESGHLLWALLFMQSLWPQLTDGATRVYYLGIRDVQWNYAPKGRNVITNQPLDSDI VASSFLKSDKNRIG GTYKKTIIYKEYKDDSYTDEVAQPAWLGFLGPVLQAEVGDVILI HLKNFATRPYTIHPHGVFYEK DSEGSL YPDGSSGPLKADDSVPPGGSHIYNWTIPE GHAPTADAPACLTIWIYHSHVDAPRDIATGLIGPLITCKRGA LDGNSPPQRQDVDHD FFLLFSVVDENLSWHLNENIATYCSDPASVDKEDETFQESNRMHAINGFVFGNLP EL NMCAQKRVAWHLFGMGNEIDVHTAFFHGMQLTTRGHHTDVANIFPATFVTAEMVP WEPGTWLISCQVN SHFRDGMQALYKVKSCSMAPPVDLLTGKVRQYFIEAHEIQWD YGPMGHGDGSTGKNLREPGSISDKFFQKS SSRIGGTYWKVRYEAFQDETFQEKMHL

 Tel: 1-631-559-9269 1-516-512-3133

 Email: info@creative-biomart.com  Fax: 1-631-938-8127

 45-1 Ramsey Road, Shirley, NY 11967, USA

EEDRHLGILGPVIRAEVGDITQVVFYNRASQPFSMQPHGVFYE KDYEGTVYNDGSS
 YPGLVAKPFKVTYRWTVPPHAGPTAQDPACTWMYFSAADPIRDTNSGLVGPLL
 C RAGALGADGKQKGV DKEFFLLFTVL DENKSWYSNANQAAAMLD FRLLSE DIEGF
 QDSNRMHAINGFLFSN LPR LDMCKGDTVAWHLLGLGTETDVHGV MFGQNTVQLQ
 GMRKGAAMLFPHTFVMAIMQPDNLGT FEIYCQ AGSHREAGMRAIYNVSQCPGHQA
 TPRQRYQAARIYYIMAE EWEVDYCPDRSWEREW HNQSEKDSYGYIFL SNKDG LLLG
 SRYKKAVFREYTDGTFRIPRPTGPEEHLGILGPLIKGEVGDILT VVFKNNASRPYSV
 HAHG VLESTTVWPLAAEPGEVVTYQWNIPERSGPGPNDSACVSWIYYS AVDP IKD
 MYSGLVGPLAICQKGILEP HGG RSDMDREFALLFLIFDENKSWYLEENVATHGSQD
 PGSINLQDET FLESNKMHAINGKLYANLRGLTM YQGERVAWYMLAMGQD VDLHTIH
 FHAESFLYRNGENYRADVVDLFPGT FEVVEMVASNPGTWLMHCHVTD HVHAGME
 TLFTVFSRTEHLSPLTVITKETEKAVPPRDIEEGNVKMLGMQIPIKNVEMLASVLVAIS
 VTLL
 LVVLALGGVVWYQHRQRKLRNRRSILDDSFKLLSFKQTRTRPLEQKLISEEDLAAN
 DILDYKDDDDKV

Purity > 80% as determined by SDS-PAGE and Coomassie blue staining.

Stability Stable for 12 months from the date of receipt of the product under proper storage and handling conditions. Avoid repeated freeze-thaw cycles.

Storage Store at -80 centigrade.

Concentration >50 ug/mL as determined by microplate BCA method.

Preparation Recombinant protein was captured through anti-DDK affinity column followed by conventional chromatography steps.

Protein Families Druggable Genome, Transmembrane

 Tel: 1-631-559-9269 1-516-512-3133

 Email: info@creative-biomart.com  Fax: 1-631-938-8127

 45-1 Ramsey Road, Shirley, NY 11967, USA

Full Length Full L.

GENE INFORMATION

Gene Name HEPH hephaestin [Homo sapiens (human)]

Official Symbol HEPH

Synonyms CPL

Gene ID 9843

mRNA Refseq NM_138737.6

Protein Refseq NP_620074.4

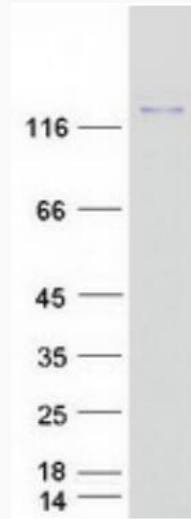
MIM 300167

UniProt ID Q9BQS7

 Tel: 1-631-559-9269 1-516-512-3133

 Email: info@creative-biomart.com  Fax: 1-631-938-8127

 45-1 Ramsey Road, Shirley, NY 11967, USA



Coomassie blue staining of purified HEPH protein.

 Tel: 1-631-559-9269 1-516-512-3133

 Email: info@creative-biomart.com  Fax: 1-631-938-8127

 45-1 Ramsey Road, Shirley, NY 11967, USA