

# Recombinant Human HES4 Protein, Myc/DDK-tagged, C13 and N15-labeled

**Cat. No.** HES4-2588H    **Lot. No.** (See product label)

## SPECIFICATION

<b>Product Overview</b>	HES4 MS Standard C13 and N15-labeled recombinant protein (NP_001135939) with a C-terminal MYC/DDK tag, was expressed in HEK293 cells.
<b>Species</b>	Human
<b>Source</b>	HEK293
<b>Description</b>	Transcriptional repressor. Binds DNA on N-box motifs: 5'-CACNAG-3'.
<b>Molecular Mass</b>	25.9 kDa
<b>AA Sequence</b>	MAADTPGKPSASPMAGAPASASRTPDKPRSAAEHRKVGSRPGVIRGATGGREGRTQPVPDPQSSKPVMEKRRRARINESLAQLKTLILDALRKESSRHSKLEKADILEMTVRLRSLRRVQVTAALSADPAVLGKYRAGFHECLAENVNRFAGCEGVPADVRSRLLGLAACLRLGSPSRPASLSPAAPAEAPAEVYAGRPLLPSLGGPFLLAPLLLPLGLTRALPAAPRAGPQGGPWRPWLRLRTRTRPLEQKLISEEDLAANDILDYKDDDDKV
<b>Purity</b>	> 80% as determined by SDS-PAGE and Coomassie blue staining
<b>Stability</b>	Stable for 3 months from receipt of products under proper storage and handling conditions.
<b>Storage</b>	Store at -80 centigrade. Avoid repeated freeze-thaw cycles.

 Tel: 1-631-559-9269    1-516-512-3133

 Email: [info@creative-biomart.com](mailto:info@creative-biomart.com)     Fax: 1-631-938-8127

 45-1 Ramsey Road, Shirley, NY 11967, USA

**Concentration** 50 µg/mL as determined by BCA

**Storage Buffer** 100 mM glycine, 25 mM Tris-HCl, pH 7.3.

## GENE INFORMATION

**Gene Name** HES4 hes family bHLH transcription factor 4 [ Homo sapiens (human) ]

**Official Symbol** HES4

**Synonyms** HES4; hairy and enhancer of split 4 (Drosophila); transcription factor HES-4; bHLHb42; hHES4; bHLH factor Hes4; class B basic helix-loop-helix protein 42;

**Gene ID** 57801

**mRNA Refseq** NM\_001142467

**Protein Refseq** NP\_001135939

**MIM** 608060

**UniProt ID** Q9HCC6

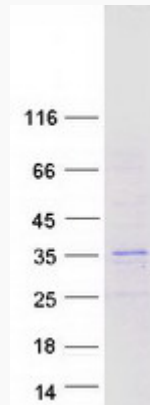
 Tel: 1-631-559-9269 1-516-512-3133

 Email: [info@creative-biomart.com](mailto:info@creative-biomart.com)  Fax: 1-631-938-8127

 45-1 Ramsey Road, Shirley, NY 11967, USA



**SDS-PAGE**



Tel: 1-631-559-9269 1-516-512-3133

Email: [info@creative-biomart.com](mailto:info@creative-biomart.com) Fax: 1-631-938-8127

45-1 Ramsey Road, Shirley, NY 11967, USA