

## Recombinant Human HES4 Protein, GST-tagged

**Cat. No.** HES4-4704H    **Lot. No.** (See product label)

### SPECIFICATION

<b>Product Overview</b>	Human HES4 full-length ORF ( NP_066993.1, 1 a.a. - 221 a.a.) recombinant protein with GST-tag at N-terminal.
<b>Species</b>	Human
<b>Source</b>	Wheat Germ
<b>Description</b>	HES4 (Hes Family BHLH Transcription Factor 4) is a Protein Coding gene. GO annotations related to this gene include transcription factor binding and protein dimerization activity. An important paralog of this gene is HES1.
<b>Molecular Mass</b>	49.9 kDa
<b>AA Sequence</b>	MAADTPGKPSASPMAGAPASASRTPDKPRSAAEHRKSSKPVMEKRRRRARINESLA QLKTLILDALRKESSRHSKLEKADILEMTVRHLRSLRRVQVTAALSADPAVLGKYRAG FHECLAENVNRFAGCEGVPADVRSRLLGHAACLRQLGPSRRPASLSPAAPAEAPA PEVYAGRPLLPSLGGPFLLAPLLPGLTRALPAAPRAGPQGGPWLPWLR
<b>Applications</b>	Enzyme-linked Immunoabsorbent Assay Western Blot (Recombinant protein) Antibody Production Protein Array
<b>Notes</b>	Best use within three months from the date of receipt of this protein.

 Tel: 1-631-559-9269    1-516-512-3133

 Email: [info@creative-biomart.com](mailto:info@creative-biomart.com)     Fax: 1-631-938-8127

 45-1 Ramsey Road, Shirley, NY 11967, USA

**Storage** Store at -8 centigrade. Aliquot to avoid repeated freezing and thawing.

**Storage Buffer** 50 mM Tris-HCl, 10 mM reduced Glutathione, pH=8.0 in the elution buffer.

## GENE INFORMATION

**Gene Name** HES4 hairy and enhancer of split 4 (Drosophila) [ Homo sapiens ]

**Official Symbol** HES4

**Synonyms** HES4; hairy and enhancer of split 4 (Drosophila); transcription factor HES-4; bHLHb42; hHES4; bHLH factor Hes4; class B basic helix-loop-helix protein 42;

**Gene ID** 57801

**mRNA Refseq** NM\_001142467

**Protein Refseq** NP\_001135939

**MIM** 608060

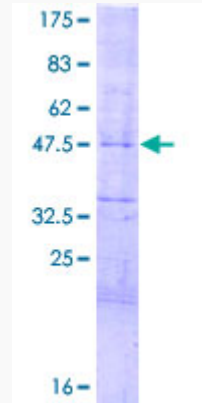
**UniProt ID** Q9HCC6

 Tel: 1-631-559-9269 1-516-512-3133

 Email: [info@creative-biomart.com](mailto:info@creative-biomart.com)  Fax: 1-631-938-8127

 45-1 Ramsey Road, Shirley, NY 11967, USA

**Quality Control  
Testing**



12.5% SDS-PAGE Stained with Coomassie Blue.

 Tel: 1-631-559-9269 1-516-512-3133

 Email: [info@creative-biomart.com](mailto:info@creative-biomart.com)  Fax: 1-631-938-8127

 45-1 Ramsey Road, Shirley, NY 11967, USA