

Recombinant Human HESX1 Protein, Myc/DDK-tagged, C13 and N15-labeled

Cat. No. HESX1-4583H Lot. No. (See product label)

SPECIFICATION

Product Overview	HESX1 MS Standard C13 and N15-labeled recombinant protein (NP_003856) with a C-terminal MYC/DDK tag, was expressed in HEK293 cells.
Species	Human
Source	HEK293
Description	This gene encodes a conserved homeobox protein that is a transcriptional repressor in the developing forebrain and pituitary gland. Mutations in this gene are associated with septo-optic dysplasia, HESX1-related growth hormone deficiency, and combined pituitary hormone deficiency.
Molecular Mass	21.4 kDa
AA Sequence	MSPSLQEGAQLGENKPKSTCSFSIERILGLDQKKDCVPLMKPHRPWADTCSSSGKDG NLCLHVPNPPSGISFPSVVDHPMPEERASKYENYFSASERLSLKRELSWYRGRPR TAFTQNQIEVLENVFRVNCYPGIDIREDLAQKLNLEEDRIQIWFQNRRAKLRSHRES QFLMAKKNFNTNLLERTRPLEQKLISEEDLAANDILDYKDDDDKV
Purity	> 80% as determined by SDS-PAGE and Coomassie blue staining
Stability	Stable for 3 months from receipt of products under proper storage and handling conditions.

 Tel: 1-631-559-9269 1-516-512-3133

 Email: info@creative-biomart.com  Fax: 1-631-938-8127

 45-1 Ramsey Road, Shirley, NY 11967, USA

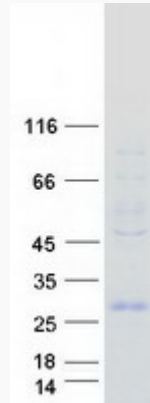
Storage	Store at -80 centigrade. Avoid repeated freeze-thaw cycles.
Concentration	50 µg/mL as determined by BCA
Storage Buffer	100 mM glycine, 25 mM Tris-HCl, pH 7.3.
GENE INFORMATION	
Gene Name	HESX1 HESX homeobox 1 [Homo sapiens (human)]
Official Symbol	HESX1
Synonyms	HESX1; HESX homeobox 1; homeobox, ES cell expressed 1; homeobox expressed in ES cells 1; ANF; RPX; hAnf; homeobox protein ANF; Rathke pouch homeobox; CPHD5; MGC138294;
Gene ID	8820
mRNA Refseq	NM_003865
Protein Refseq	NP_003856
MIM	601802
UniProt ID	Q9UBX0

 Tel: 1-631-559-9269 1-516-512-3133

 Email: info@creative-biomart.com  Fax: 1-631-938-8127

 45-1 Ramsey Road, Shirley, NY 11967, USA

SDS-PAGE



 Tel: 1-631-559-9269 1-516-512-3133

 Email: info@creative-biomart.com  Fax: 1-631-938-8127

 45-1 Ramsey Road, Shirley, NY 11967, USA