

## Recombinant Human HEXB Protein (Lys315-Tyr456), His tagged

Cat. No. HEXB-2446H Lot. No. (See product label)

### SPECIFICATION

<b>Product Overview</b>	Recombinant human HEXB (Lys315-Tyr456) protein fused with His tag was expressed in E. coli.
<b>Species</b>	Human
<b>Source</b>	E.coli
<b>ProteinLength</b>	Lys315-Tyr456
<b>Description</b>	Responsible for the degradation of GM2 gangliosides, and a variety of other molecules containing terminal N-acetyl hexosamines, in the brain and other tissues.
<b>Form</b>	Lyophilized
<b>Molecular Mass</b>	18.57 kDa
<b>Purity</b>	>90 % as determined by SDS-PAGE.
<b>Notes</b>	For research use only.
<b>Storage</b>	Use a manual defrost freezer and avoid repeated freeze thaw cycles. Store at 2 to 8 centigrade for one week. Store at -20 to -80 centigrade for twelve months from the date of receipt.

 Tel: 1-631-559-9269 1-516-512-3133

 Email: [info@creative-biomart.com](mailto:info@creative-biomart.com)  Fax: 1-631-938-8127

 45-1 Ramsey Road, Shirley, NY 11967, USA

<b>Storage Buffer</b>	Lyophilized from PBS pH 7.4, 0.02 % NLS, 1mM EDTA, 4 % trehalose, 1 % mannitol.
<b>Reconstitution</b>	Reconstitute in sterile water for a stock solution.
<b>Shipping</b>	In general, proteins are provided as lyophilized powder/frozen liquid. They are shipped out with dry ice/blue ice unless customers require otherwise.

## GENE INFORMATION

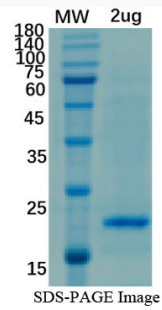
<b>Gene Name</b>	HEXB hexosaminidase B (beta polypeptide) [ Homo sapiens (human) ]
<b>Official Symbol</b>	HEXB
<b>Synonyms</b>	HEXB; hexosaminidase B (beta polypeptide); beta-hexosaminidase subunit beta; HCC-7; hexosaminidase subunit B; beta-N-acetylhexosaminidase subunit beta; cervical cancer proto-oncogene 7 protein; N-acetyl-beta-glucosaminidase subunit beta; ENC-1AS;
<b>Gene ID</b>	3074
<b>mRNA Refseq</b>	NM_000521
<b>Protein Refseq</b>	NP_000512
<b>MIM</b>	606873
<b>UniProt ID</b>	P07686

 Tel: 1-631-559-9269 1-516-512-3133

 Email: [info@creative-biomart.com](mailto:info@creative-biomart.com)  Fax: 1-631-938-8127

 45-1 Ramsey Road, Shirley, NY 11967, USA

**SDS-PAGE**



 Tel: 1-631-559-9269 1-516-512-3133

 Email: [info@creative-biomart.com](mailto:info@creative-biomart.com)  Fax: 1-631-938-8127

 45-1 Ramsey Road, Shirley, NY 11967, USA