

## Recombinant Human HEXIM1 Protein, GST-tagged

Cat. No. HEXIM1-4713H Lot. No. (See product label)

### SPECIFICATION

<b>Product Overview</b>	Human HEXIM1 full-length ORF ( AAH06460, 1 a.a. - 359 a.a.) recombinant protein with GST-tag at N-terminal.
<b>Species</b>	Human
<b>Source</b>	Wheat Germ
<b>Description</b>	Expression of this gene is induced by hexamethylene-bis-acetamide in vascular smooth muscle cells. This gene has no introns. [provided by RefSeq]
<b>Molecular Mass</b>	65.23 kDa
<b>AA Sequence</b>	<p>MAEPFLSEYQHQPQTSNCTGAAAVQEELNPERPPGAEERVPEEDSRWQSRAFPQL  GGRPGPEGEGSLESQPPPLQTQACPESSCLREGEKGGQNGDDSSAGGDFPPPAEV  EPTPEAELLAQPCHDSEASKLGAPAAGGEEEWGQQQRQLGKKKRRRPSKKKRH  WKPYYKLTWEEKKKFDEKQSLRASRIRAEMFAKGQPVAPYNTTQFLMDDHDQEEP  DLKTGLYSKRAAAKSDDTSDDDFMEEGG EEDGGSDGMGGDGSEFLQRDFSETYE  RYHTESLQNMSKQELIKEYLELEKCLSRMEDENNRLRLESKRLGGDDARVRELELEL  DRLRAENLQLLTENELHRQQERAPLSKFGD</p>
<b>Applications</b>	<p>Enzyme-linked Immunoabsorbent Assay  Western Blot (Recombinant protein)  Antibody Production  Protein Array</p>

 Tel: 1-631-559-9269 1-516-512-3133

 Email: [info@creative-biomart.com](mailto:info@creative-biomart.com)  Fax: 1-631-938-8127

 45-1 Ramsey Road, Shirley, NY 11967, USA

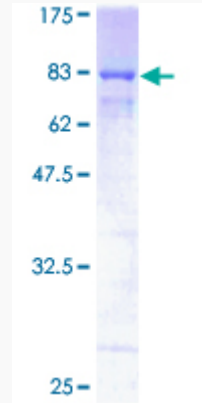
<b>Notes</b>	Best use within three months from the date of receipt of this protein.
<b>Storage</b>	Store at -8 centigrade. Aliquot to avoid repeated freezing and thawing.
<b>Storage Buffer</b>	50 mM Tris-HCl, 10 mM reduced Glutathione, pH=8.0 in the elution buffer.
<b>GENE INFORMATION</b>	
<b>Gene Name</b>	HEXIM1 hexamethylene bis-acetamide inducible 1 [ Homo sapiens ]
<b>Official Symbol</b>	HEXIM1
<b>Synonyms</b>	HEXIM1; hexamethylene bis-acetamide inducible 1; protein HEXIM1; CLP 1; EDG1; HIS1; MAQ1; HMBA-inducible; menage a quatre 1; cardiac lineage protein 1; menage a quatre protein 1; estrogen down-regulated gene 1 protein; hexamethylene bis-acetamide inducible 1; hexamethylene bisacetamide-inducible protein; hexamethylene bis-acetamide-inducible protein 1; hexamethylene-bis-acetamide-inducible transcript 1; CLP1; FLJ13562;
<b>Gene ID</b>	10614
<b>mRNA Refseq</b>	NM_006460
<b>Protein Refseq</b>	NP_006451
<b>MIM</b>	607328
<b>UniProt ID</b>	O94992

 Tel: 1-631-559-9269 1-516-512-3133

 Email: [info@creative-biomart.com](mailto:info@creative-biomart.com)  Fax: 1-631-938-8127

 45-1 Ramsey Road, Shirley, NY 11967, USA

**Quality Control  
Testing**



12.5% SDS-PAGE Stained with Coomassie Blue.

 Tel: 1-631-559-9269 1-516-512-3133

 Email: [info@creative-biomart.com](mailto:info@creative-biomart.com)  Fax: 1-631-938-8127

 45-1 Ramsey Road, Shirley, NY 11967, USA