

# Recombinant Human HFE Protein, Myc/DDK-tagged, C13 and N15-labeled

**Cat. No.** HFE-1231H    **Lot. No.** (See product label)

## SPECIFICATION

<b>Product Overview</b>	HFE MS Standard C13 and N15-labeled recombinant protein (NP_000401) with a C-terminal MYC/DDK tag, was expressed in HEK293 cells.
<b>Species</b>	Human
<b>Source</b>	HEK293
<b>Description</b>	The protein encoded by this gene is a membrane protein that is similar to MHC class I-type proteins and associates with beta2-microglobulin (beta2M). It is thought that this protein functions to regulate iron absorption by regulating the interaction of the transferrin receptor with transferrin. The iron storage disorder, hereditary haemochromatosis, is a recessive genetic disorder that results from defects in this gene. At least nine alternatively spliced variants have been described for this gene. Additional variants have been found but their full-length nature has not been determined.
<b>Molecular Mass</b>	40.11 kDa
<b>AA Sequence</b>	MGPRARPALLLLMLLQTAVLQGRLLRSHSLHYLFMGASEQDLGLSLFEALGYVDDQ LFVFDHESRRVEPRTPWVSSRISSQMWLQLSQSLKGDHMFVDFWTIMENHNH SKESHTLQVILGCEMQEDNSTEGYWKYGYDGDHLEFCPDTLDWRAAEPRAWPTK LEWERHKIRARQNRAYLERDCPAQLQQLLELGRGVLDQQVPPLVKVTHHVTSSVTT LRCRALNYYPNITMKWLKDKQPMDAKEFEPKDVLPNGDGTYYQGWITLAVPPGEE

 Tel: 1-631-559-9269    1-516-512-3133

 Email: [info@creative-biomart.com](mailto:info@creative-biomart.com)     Fax: 1-631-938-8127

 45-1 Ramsey Road, Shirley, NY 11967, USA

QRYTCQVEHPGLDQPLIVIWEPSGTLVIGVISGIAVFFVILFIGILFIILRKRQGSRGA  
MGHYVLAERETRTRPLEQKLISEEDLAANDILDYKDDDDKV

**Purity** > 80% as determined by SDS-PAGE and Coomassie blue staining

**Stability** Stable for 3 months from receipt of products under proper storage and handling conditions.

**Storage** Store at -80 centigrade. Avoid repeated freeze-thaw cycles.

**Concentration** 50 µg/mL as determined by BCA

**Storage Buffer** 100 mM glycine, 25 mM Tris-HCl, pH 7.3.

## GENE INFORMATION

**Gene Name** HFE hemochromatosis [ Homo sapiens (human) ]

**Official Symbol** HFE

**Synonyms** HFE; hemochromatosis; hereditary hemochromatosis protein; high Fe; HLA H; MHC class I-like protein HFE; hereditary hemochromatosis protein HLA-H; HH; HFE1; HLA-H; MVCD7; TFQTL2; MGC103790; MGC:150812; dJ221C16.10.1; IMAGE:40125754;

**Gene ID** 3077

**mRNA Refseq** NM\_000410

**Protein Refseq** NP\_000401

**MIM** 613609

 Tel: 1-631-559-9269 1-516-512-3133

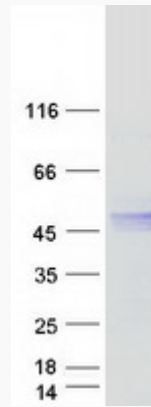
 Email: [info@creative-biomart.com](mailto:info@creative-biomart.com)  Fax: 1-631-938-8127

 45-1 Ramsey Road, Shirley, NY 11967, USA

UniProt ID

Q30201

SDS-PAGE



 Tel: 1-631-559-9269 1-516-512-3133

 Email: [info@creative-biomart.com](mailto:info@creative-biomart.com)  Fax: 1-631-938-8127

 45-1 Ramsey Road, Shirley, NY 11967, USA