

Recombinant Human HFE Protein, MYC/DDK-tagged, C13 and N15-labeled

Cat. No. HFE-206H **Lot. No.** (See product label)

SPECIFICATION

Product Overview

HFE MS Standard C13 and N15-labeled recombinant protein (NP_620575) with a C-terminal MYC/DDK tag, was expressed in HEK293 cells.

Species

Human

Source

HEK293

Description

The protein encoded by this gene is a membrane protein that is similar to MHC class I-type proteins and associates with beta2-microglobulin (beta2M). It is thought that this protein functions to regulate iron absorption by regulating the interaction of the transferrin receptor with transferrin. The iron storage disorder, hereditary haemochromatosis, is a recessive genetic disorder that results from defects in this gene. At least nine alternatively spliced variants have been described for this gene. Additional variants have been found but their full-length nature has not been determined. [provided by RefSeq, Jul 2008]

Molecular Mass

36.2 kDa

AA Sequence

MGPRARPALLLLMLLQTAVLQGRLLRSHSLHYLFMGASEQDLGLSLFEALGYVDDQ
 LFFVYDHESRRVEPRTPWVSSRISSQMWLQLSQSLKGDHMFVDFWTIMENHNH
 SKESHTLQVILGCEMQEDNSTEGYWKYGYDGDHLEFCPDTLDWRAAEPRAWPTK
 LEWERHKIRARQNRAYLERDCPAQLQQLLELGRGVLDQQVTTLCRALNYYPNIT
 MKWLKDKQPMDAKEFEPKDVLPNGDGTYYQGWITLAVPPGEEQRYTCQVEHPGLD

 Tel: 1-631-559-9269 1-516-512-3133

 Email: info@creative-biomart.com  Fax: 1-631-938-8127

 45-1 Ramsey Road, Shirley, NY 11967, USA

QPLIVIWEPSGTLVIGVISGIAVFFVILFIGILFIILRKRQGSRGAMGHYVLAERETRT
RPLEQKLISEEDLAANDILDYKDDDDKV

Purity > 80% as determined by SDS-PAGE and Coomassie blue staining

Stability Stable for 3 months from receipt of products under proper storage and handling conditions.

Storage Store at -80 centigrade. Avoid repeated freeze-thaw cycles.

Concentration 50 µg/mL as determined by BCA

Storage Buffer 100 mM glycine, 25 mM Tris-HCl, pH 7.3.

GENE INFORMATION

Gene Name HFE hemochromatosis [Homo sapiens (human)]

Official Symbol HFE

Synonyms HFE; hemochromatosis; hereditary hemochromatosis protein; high Fe; HLA H; MHC class I-like protein HFE; hereditary hemochromatosis protein HLA-H; HH; HFE1; HLA-H; MVCD7; TFQTL2; MGC103790; MGC:150812; dJ221C16.10.1; IMAGE:40125754;

Gene ID 3077

mRNA Refseq NM_139006

Protein Refseq NP_620575

MIM 613609

 Tel: 1-631-559-9269 1-516-512-3133

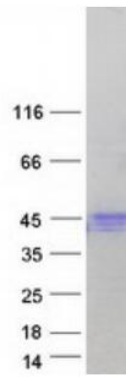
 Email: info@creative-biomart.com  Fax: 1-631-938-8127

 45-1 Ramsey Road, Shirley, NY 11967, USA

UniProt ID

Q30201

SDS-PAGE



 Tel: 1-631-559-9269 1-516-512-3133

 Email: info@creative-biomart.com  Fax: 1-631-938-8127

 45-1 Ramsey Road, Shirley, NY 11967, USA