

Recombinant Full Length Human HFE Protein, C-Flag-tagged

Cat. No. HFE-455HFL **Lot. No.** (See product label)

SPECIFICATION

Product Overview	Recombinant Full Length Human HFE Protein, fused to Flag-tag at C-terminus, was expressed in Mammalian cells.
Species	Human
Source	Mammalian Cells
Description	The protein encoded by this gene is a membrane protein that is similar to MHC class I-type proteins and associates with beta2-microglobulin (beta2M). It is thought that this protein functions to regulate iron absorption by regulating the interaction of the transferrin receptor with transferrin. The iron storage disorder, hereditary haemochromatosis, is a recessive genetic disorder that results from defects in this gene. At least nine alternatively spliced variants have been described for this gene. Additional variants have been found but their full-length nature has not been determined.
Form	25 mM Tris HCl, pH 7.3, 100 mM glycine, 10% glycerol.
Molecular Mass	37.7 kDa
AA Sequence	MGPRARPALLLLMLLQTAVLQGRIILRSHSLHYLFMGASEQDLGLSLFEALGYVDDQ LFVFDHESRRVEP RTPWVSSRISSQMWLQLSQSLKGDHMFVDFWTIMENHN HSKESHTLQVILGCEMQEDNSTEGYWKYGY DGQDHLEFCPDTLDWRAAEPRAWP TKLEWERHKIRARQNRAYLERDCPAQLQQLLELGRGVLDQQVPLV KVTHHVTSS VTTLRCRALNYYPQNITMKWLKDKQPMDAKEFEPKDVLPNGDGTYYQGWITLAVPPG

 Tel: 1-631-559-9269 1-516-512-3133

 Email: info@creative-biomart.com  Fax: 1-631-938-8127

 45-1 Ramsey Road, Shirley, NY 11967, USA

EEQRY TCQVEHPGLDQPLIVIWEPSPSGTLVIGVISGIAVFFVILFIGILFIILRKRQGSR
GAMGHYVLAERETRTRPLEQKLISEEDLAANDILDYKDDDDKV

Purity	> 80% as determined by SDS-PAGE and Coomassie blue staining.
Stability	Stable for 12 months from the date of receipt of the product under proper storage and handling conditions. Avoid repeated freeze-thaw cycles.
Storage	Store at -80 centigrade.
Concentration	>50 ug/mL as determined by microplate BCA method.
Preparation	Recombinant protein was captured through anti-DDK affinity column followed by conventional chromatography steps.
Protein Families	Druggable Genome, Transmembrane
Full Length	Full L.

GENE INFORMATION

Gene Name	HFE homeostatic iron regulator [Homo sapiens (human)]
Official Symbol	HFE
Synonyms	HH; HFE1; HLA-H; MVCD7; TFQTL2
Gene ID	3077
mRNA Refseq	NM_000410.4

 Tel: 1-631-559-9269 1-516-512-3133

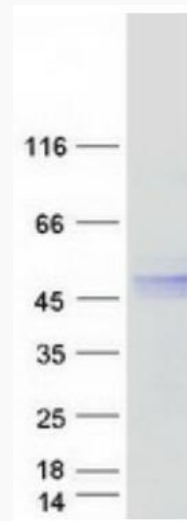
 Email: info@creative-biomart.com  Fax: 1-631-938-8127

 45-1 Ramsey Road, Shirley, NY 11967, USA

Protein Refseq NP_000401.1

MIM 613609

UniProt ID Q30201



Coomassie blue staining of purified HFE protein.

 Tel: 1-631-559-9269 1-516-512-3133

 Email: info@creative-biomart.com  Fax: 1-631-938-8127

 45-1 Ramsey Road, Shirley, NY 11967, USA