

Recombinant Human HFE Protein, GST-tagged

Cat. No. HFE-4721H Lot. No. (See product label)

SPECIFICATION

Product Overview	Human HFE partial ORF (NP_000401, 115 a.a. - 205 a.a.) recombinant protein with GST-tag at N-terminal.
Species	Human
Source	Wheat Germ
Description	The protein encoded by this gene is a membrane protein that is similar to MHC class I-type proteins and associates with beta2-microglobulin (beta2M). It is thought that this protein functions to regulate iron absorption by regulating the interaction of the transferrin receptor with transferrin. The iron storage disorder, hereditary haemochromatosis, is a recessive genetic disorder that results from defects in this gene. At least nine alternatively spliced variants have been described for this gene. Additional variants have been found but their full-length nature has not been determined. [provided by RefSeq]
Molecular Mass	35.75 kDa
AA Sequence	SHTLQVILGCEMQEDNSTEGYWKYGYDGGQDHLFCPDTLDWRAAEPRAWPTKLE WERHKIRARQNRAYLERDQCPAQLQQLLELGRGVLDQQ
Applications	Enzyme-linked Immunoabsorbent Assay Western Blot (Recombinant protein) Antibody Production Protein Array

 Tel: 1-631-559-9269 1-516-512-3133

 Email: info@creative-biomart.com  Fax: 1-631-938-8127

 45-1 Ramsey Road, Shirley, NY 11967, USA

Notes	Best use within three months from the date of receipt of this protein.
Storage	Store at -8 centigrade. Aliquot to avoid repeated freezing and thawing.
Storage Buffer	50 mM Tris-HCl, 10 mM reduced Glutathione, pH=8.0 in the elution buffer.

GENE INFORMATION

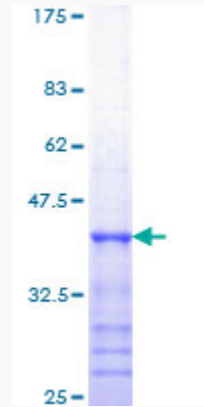
Gene Name	HFE hemochromatosis [Homo sapiens]
Official Symbol	HFE
Synonyms	HFE; hemochromatosis; hereditary hemochromatosis protein; high Fe; HLA H; MHC class I-like protein HFE; hereditary hemochromatosis protein HLA-H; HH; HFE1; HLA-H; MVCD7; TFQTL2; MGC103790; MGC:150812; dJ221C16.10.1; IMAGE:40125754;
Gene ID	3077
mRNA Refseq	NM_000410
Protein Refseq	NP_000401
MIM	613609
UniProt ID	Q30201

 Tel: 1-631-559-9269 1-516-512-3133

 Email: info@creative-biomart.com  Fax: 1-631-938-8127

 45-1 Ramsey Road, Shirley, NY 11967, USA

**Quality Control
Testing**



12.5% SDS-PAGE Stained with Coomassie Blue.

 Tel: 1-631-559-9269 1-516-512-3133

 Email: info@creative-biomart.com  Fax: 1-631-938-8127

 45-1 Ramsey Road, Shirley, NY 11967, USA