

## Recombinant Human HFE2 protein, His & GST-tagged

Cat. No. HFE2-2084H Lot. No. (See product label)

### SPECIFICATION

<b>Product Overview</b>	Recombinant Human HFE2 aa. (Gln36~Phe200 (Accession # Q6ZVN8)) fused with N-terminal His & GST tag was produced in E. coli cells.
<b>Species</b>	Human
<b>Source</b>	E.coli
<b>ProteinLength</b>	Gln36~Phe200
<b>Form</b>	Freeze-dried powder
<b>Molecular Mass</b>	Predicted Molecular Mass: 47.4kDa
<b>Endotoxin</b>	<1.0EU per 1ug (determined by the LAL method)
<b>Purity</b>	>90%
<b>Characteristic</b>	The isoelectric point is 9.4.
<b>Applications</b>	SDS-PAGE; WB; ELISA; IP.
<b>Stability</b>	The thermal stability is described by the loss rate of the target protein. The loss rate was determined by accelerated thermal degradation test, that is, incubate the protein at 37°C for 48h, and no obvious degradation and precipitation were observed. (Referring from China Biological Products Standard, which was calculated by the

 Tel: 1-631-559-9269 1-516-512-3133

 Email: [info@creative-biomart.com](mailto:info@creative-biomart.com)  Fax: 1-631-938-8127

 45-1 Ramsey Road, Shirley, NY 11967, USA

Arrhenius equation.) The loss of this protein is less than 5% within the expiration date under appropriate storage condition.

**Storage**

Avoid repeated freeze/thaw cycles. Store at 2-8°C for one month. Aliquot and store at -80°C for 12 months.

**Storage Buffer**

Supplied as lyophilized form in 20mM Tris, 150mM NaCl, pH8.0, containing 1mM EDTA, 1mM DTT, 0.01% sarcosyl, 5% trehalose, and preservative.

**Reconstitution**

Reconstitute in sterile ddH<sub>2</sub>O.

## GENE INFORMATION

**Gene Name**

[HFE2 hemochromatosis type 2 \(juvenile\) \[ Homo sapiens \(human\) \]](#)

**Official Symbol**

[HFE2](#)

**Synonyms**

Rgs10; regulator of G-protein signalling 10; 2310010N19Rik; regulator of G-protein signaling 10

**Gene ID**

[148738](#)

**mRNA Refseq**

[NM\\_001316767.1](#)

**Protein Refseq**

[NP\\_001303696.1](#)

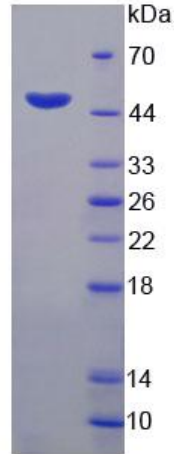
**UniProt ID**

[Q6ZVN8](#)

 Tel: 1-631-559-9269 1-516-512-3133

 Email: [info@creative-biomart.com](mailto:info@creative-biomart.com)  Fax: 1-631-938-8127

 45-1 Ramsey Road, Shirley, NY 11967, USA



15% SDS-PAGE

SDS-PAGE

 Tel: 1-631-559-9269 1-516-512-3133

 Email: [info@creative-biomart.com](mailto:info@creative-biomart.com)  Fax: 1-631-938-8127

 45-1 Ramsey Road, Shirley, NY 11967, USA