

## Recombinant Human HFE2 protein, His & Fc-tagged

**Cat. No.** HFE2-469H    **Lot. No.** (See product label)

### SPECIFICATION

<b>Product Overview</b>	Recombinant Human HFE2 (Q6ZVN8) aa. (Gln36~Asp400) fused with His & Fc tag was produced in HEK293F cells.
<b>Species</b>	Human
<b>Source</b>	HEK293
<b>ProteinLength</b>	Gln36~Asp400
<b>Description</b>	<p>The product of this gene is involved in iron metabolism. It may be a component of the signaling pathway which activates hepcidin or it may act as a modulator of hepcidin expression. It could also represent the cellular receptor for hepcidin. Two uORFs in the 5' UTR negatively regulate the expression and activity of the encoded protein. Alternatively spliced transcript variants encoding different isoforms have been identified for this gene. Defects in this gene are the cause of hemochromatosis type 2A, also called juvenile hemochromatosis (JH). JH is an early-onset autosomal recessive disorder due to severe iron overload resulting in hypogonadotropic hypogonadism, hepatic fibrosis or cirrhosis and cardiomyopathy, occurring typically before age of 30.</p>
<b>Form</b>	Freeze-dried powder
<b>Molecular Mass</b>	Predicted Molecular Mass: 66.1kDa; Accurate Molecular Mass: 69kDa as determined by SDS-PAGE reducing conditions.

 Tel: 1-631-559-9269    1-516-512-3133

 Email: [info@creative-biomart.com](mailto:info@creative-biomart.com)     Fax: 1-631-938-8127

 45-1 Ramsey Road, Shirley, NY 11967, USA

<b>Endotoxin</b>	<1.0EU per 1ug (determined by the LAL method)
<b>Purity</b>	> 95%
<b>Characteristic</b>	Isoelectric point is 7.7 .
<b>Applications</b>	SDS-PAGE; WB; ELISA; IP; CoIP; EMSA; Reporter Assays; Purification; Amine Reactive Labeling
<b>Stability</b>	The thermal stability is described by the loss rate. The loss rate was determined by accelerated thermal degradation test, that is, incubate the protein at 37°C for 48h, and no obvious degradation and precipitation were observed. The loss rate is less than 5% within the expiration date under appropriate storage condition.
<b>Storage</b>	Avoid repeated freeze/thaw cycles. Store at 2-8°C for one month. Aliquot and store at -80°C for 12 months.
<b>Concentration</b>	200ug/mL
<b>Storage buffer</b>	20mM Tris, 150mM NaCl, pH8.0, containing 1mM EDTA, 1mM DTT, 5% Trehalose and Proclin300.
<b>Reconstitution</b>	Reconstitute in 20mM Tris, 150mM NaCl (pH8.0) to a concentration of 0.1-1.0 mg/mL. Do not vortex

## GENE INFORMATION

<b>Gene Name</b>	HFE2 hemochromatosis type 2 (juvenile) [ Homo sapiens (human) ]
<b>Official Symbol</b>	HFE2

 Tel: 1-631-559-9269 1-516-512-3133

 Email: [info@creative-biomart.com](mailto:info@creative-biomart.com)  Fax: 1-631-938-8127

 45-1 Ramsey Road, Shirley, NY 11967, USA

**Synonyms** HFE2; hemochromatosis type 2 (juvenile); JH; HJV; RGMC; HFE2A; hemojuvelin; RGM domain family member C; haemojuvelin; hemochromatosis type 2 protein; repulsive guidance molecule c

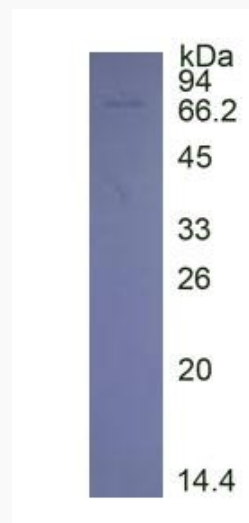
**Gene ID** 148738

**mRNA Refseq** NM\_001316767.1

**Protein Refseq** NP\_001303696.1

**UniProt ID** Q6ZVN8

**SDS-PAGE**



 Tel: 1-631-559-9269 1-516-512-3133

 Email: [info@creative-biomart.com](mailto:info@creative-biomart.com)  Fax: 1-631-938-8127

 45-1 Ramsey Road, Shirley, NY 11967, USA