

Recombinant Human HFE2 Protein, GST-tagged

Cat. No. HFE2-4722H **Lot. No.** (See product label)

SPECIFICATION

Product Overview	Human HFE2 partial ORF (NP_973733, 93 a.a. - 173 a.a.) recombinant protein with GST-tag at N-terminal.
Species	Human
Source	Wheat Germ
Description	<p>The product of this gene is involved in iron metabolism. It may be a component of the signaling pathway which activates hepcidin or it may act as a modulator of hepcidin expression. It could also represent the cellular receptor for hepcidin. Alternatively spliced transcript variants encoding different isoforms have been identified for this gene. Defects in this gene are the cause of hemochromatosis type 2A, also called juvenile hemochromatosis (JH). JH is an early-onset autosomal recessive disorder due to severe iron overload resulting in hypogonadotrophic hypogonadism, hepatic fibrosis or cirrhosis and cardiomyopathy, occurring typically before age of 30.</p> <p>[provided by RefSeq]</p>
Molecular Mass	34.65 kDa
AA Sequence	GGCPPSQRLSRSERNRRGAITIDTARRLCKEGLPVEDAYFHSCVFDVLISGDPNFTV AAQAALEDARAFLPDLEKLHLFPS
Applications	<p>Enzyme-linked Immunoabsorbent Assay</p> <p>Western Blot (Recombinant protein)</p> <p>Antibody Production</p>

 Tel: 1-631-559-9269 1-516-512-3133

 Email: info@creative-biomart.com  Fax: 1-631-938-8127

 45-1 Ramsey Road, Shirley, NY 11967, USA

Protein Array

Notes	Best use within three months from the date of receipt of this protein.
Storage	Store at -8 centigrade. Aliquot to avoid repeated freezing and thawing.
Storage Buffer	50 mM Tris-HCl, 10 mM reduced Glutathione, pH=8.0 in the elution buffer.

GENE INFORMATION

Gene Name	HFE2 hemochromatosis type 2 (juvenile) [Homo sapiens]
Official Symbol	HFE2
Synonyms	HFE2; hemochromatosis type 2 (juvenile); hemojuvelin; haemojuvelin; HFE2A; HJV; JH; repulsive guidance molecule c; RGMC; RGM domain family member C; hemochromatosis type 2 protein; MGC23953;
Gene ID	148738
mRNA Refseq	NM_145277
Protein Refseq	NP_660320
MIM	608374
UniProt ID	Q6ZVN8

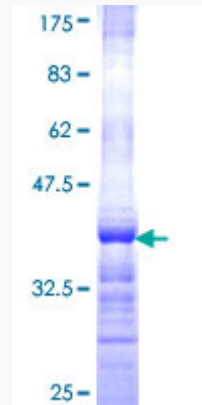
 Tel: 1-631-559-9269 1-516-512-3133

 Email: info@creative-biomart.com  Fax: 1-631-938-8127

 45-1 Ramsey Road, Shirley, NY 11967, USA



**Quality Control
Testing**



12.5% SDS-PAGE Stained with Coomassie Blue.

Tel: 1-631-559-9269 1-516-512-3133

Email: info@creative-biomart.com Fax: 1-631-938-8127

45-1 Ramsey Road, Shirley, NY 11967, USA