

Recombinant Human HGF protein, For Organoid Culture

Cat. No. HGF-2847H **Lot. No.** (See product label)

SPECIFICATION

Product Overview	Recombinant Human HGF protein(P14210.2)(Gln28-Cys232) was expressed in HEK293.
Species	Human
Source	HEK293
ProteinLength	Gln28-Cys232
Tag	Non
Form	Lyophilized from sterile PBS, pH 7.4, 3% trehalose.
Bio-activity	The activity was determined by the dose-dependent stimulation of the proliferation of the monkey 4MBr-5 cell line. The ED50 for this effect is 5-50 ng/mL.
Molecular Mass	Single chain:79.7kDa, alpha chain: 53.7 kDa, beta chain: 26 kDa.
Endotoxin	<0.10 EU/μg of the protein by the LAL method.
Purity	>90%, by SDS-PAGE under reducing conditions.
Storage	The product is shipped at ambient temperature. Upon receipt, store it immediately at the temperature recommended below: To the date of expiration, -20°C to -80°C as supplied. 3 months, -20°C to -80°C under sterile conditions after reconstitution. 1

 Tel: 1-631-559-9269 1-516-512-3133

 Email: info@creative-biomart.com  Fax: 1-631-938-8127

 45-1 Ramsey Road, Shirley, NY 11967, USA

month, 2 to 8 °C under sterile conditions after reconstitution. Avoid repeated freeze-thaw cycles.

Reconstitution

It is recommended that sterile water be added to the vial to prepare a stock solution of 0.2 ug/ul. Centrifuge the vial at 4°C before opening to recover the entire contents.

GENE INFORMATION

Gene Name [HGF hepatocyte growth factor \(hepapoietin A; scatter factor\) \[Homo sapiens \]](#)

Official Symbol [HGF](#)

Synonyms

HGF; hepatocyte growth factor (hepapoietin A; scatter factor); deafness, autosomal recessive 39 , DFNB39; hepatocyte growth factor; F TCF; fibroblast derived tumor cytotoxic factor; hepatopoietin A; HGFB; HPTA; lung fibroblast derived mitogen; scatter factor; SF; hepatopoeitin-A; hepatopoietin-A; lung fibroblast-derived mitogen; fibroblast-derived tumor cytotoxic factor; F-TCF; DFNB39;

Gene ID [3082](#)

mRNA Refseq [NM_000601](#)

Protein Refseq [NP_000592](#)

MIM [142409](#)

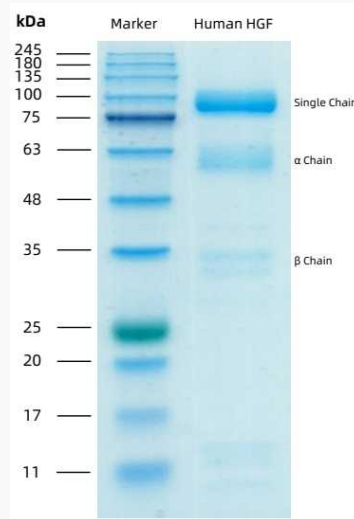
UniProt ID [P14210](#)

 Tel: 1-631-559-9269 1-516-512-3133

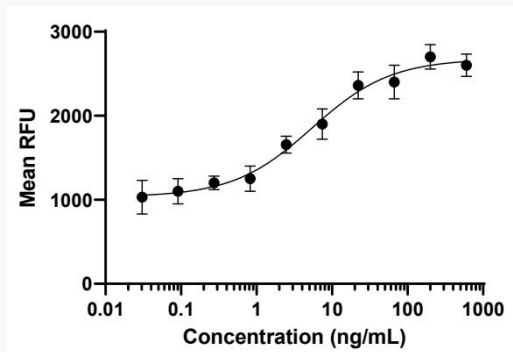
 Email: info@creative-biomart.com  Fax: 1-631-938-8127


 45-1 Ramsey Road, Shirley, NY 11967, USA

SDS-PAGE




Activity



 Tel: 1-631-559-9269 1-516-512-3133

 Email: info@creative-biomart.com  Fax: 1-631-938-8127

 45-1 Ramsey Road, Shirley, NY 11967, USA