

Recombinant Human HHEX Protein, Myc/DDK-tagged, C13 and N15-labeled

Cat. No. HHEX-2581H **Lot. No.** (See product label)

SPECIFICATION

Product Overview	HHEX MS Standard C13 and N15-labeled recombinant protein (NP_002720) with a C-terminal MYC/DDK tag, was expressed in HEK293 cells.
Species	Human
Source	HEK293
Description	This gene encodes a member of the homeobox family of transcription factors, many of which are involved in developmental processes. Expression in specific hematopoietic lineages suggests that this protein may play a role in hematopoietic differentiation.
Molecular Mass	29.8 kDa
AA Sequence	<p>MQYPHPGPAAGAVGVPLYAPTPLLQPAHPTPFYIEDILGRGPAAPTPAPTLPSNSS FTSLVSPYRTPVYEPTPIHPAFSHHSAAAALAAAYGPGGFGGPLYPPFRTVNDYTHAL LRHDPLGKPLLWSPFLQRPLHKRKGGQVRFNSNDQTIELEKKFETQKYLSPPERKRLA KMLQLSERQVKTWFQNRRAKWRLKQENPQSNKKEELESLSQDQRQDLPSEQ NKGASLDSSQCSPSPASQEDLESEISEDSDQEVDIEGDKSYFNAGTRTRPLEQKLIS EEDLAANDILDYKDDDDKV</p>
Purity	> 80% as determined by SDS-PAGE and Coomassie blue staining
Stability	Stable for 3 months from receipt of products under proper storage and handling

 Tel: 1-631-559-9269 1-516-512-3133

 Email: info@creative-biomart.com  Fax: 1-631-938-8127

 45-1 Ramsey Road, Shirley, NY 11967, USA

conditions.

Storage Store at -80 centigrade. Avoid repeated freeze-thaw cycles.

Concentration 50 µg/mL as determined by BCA

Storage Buffer 100 mM glycine, 25 mM Tris-HCl, pH 7.3.

GENE INFORMATION

Gene Name [HHEX hematopoietically expressed homeobox \[Homo sapiens \(human\) \]](#)

Official Symbol [HHEX](#)

Synonyms HHEX; hematopoietically expressed homeobox; PRHX; hematopoietically-expressed homeobox protein HHEX; HEX; HOX11L PEN; homeobox protein HEX; homeobox protein PRH; homeobox, hematopoietically expressed; proline-rich homeodomain-containing transcription factor; PRH; HMPH; HOX11L-PEN;

Gene ID [3087](#)

mRNA Refseq [NM_002729](#)

Protein Refseq [NP_002720](#)

MIM [604420](#)

UniProt ID [Q03014](#)

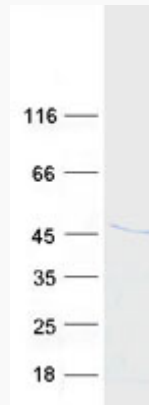
 Tel: 1-631-559-9269 1-516-512-3133

 Email: info@creative-biomart.com  Fax: 1-631-938-8127

 45-1 Ramsey Road, Shirley, NY 11967, USA



SDS-PAGE



Tel: 1-631-559-9269 1-516-512-3133

Email: info@creative-biomart.com Fax: 1-631-938-8127

45-1 Ramsey Road, Shirley, NY 11967, USA