

Recombinant Human HHEX Protein, GST-tagged

Cat. No. HHEX-4736H Lot. No. (See product label)

SPECIFICATION

Product Overview	Human HHEX full-length ORF (AAH14336, 1 a.a. - 270 a.a.) recombinant protein with GST-tag at N-terminal.
Species	Human
Source	Wheat Germ
Description	This gene encodes a member of the homeobox family of transcription factors, many of which are involved in developmental processes. Expression in specific hematopoietic lineages suggests that this protein may play a role in hematopoietic differentiation. [provided by RefSeq]
Molecular Mass	55.44 kDa
AA Sequence	MQYPHPGPAAGAVGVPLYAPTPLLQPAHPTPFYIEDILGRGPAAPTPAPTLPSNSS FTSLVSPYRTPVYEPTPIHPAFSHHSAAAALAAAYGPGGFGGPLYPFPRTVNDYTHAL LRHDPLGKPLLWSPFLQRPLHKRKGGQVRFSNDQTIELEKKFETQKYLSPPERKRLT KMLQLSERQVKTWFQNRRAKWRRLKQENPQSNKKEELESLDSSCDQRQDLPSEQ NKGASLDSSQCSPSPASQEDLESEISEDSDQEVDIEGDKSYFNAG
Applications	Enzyme-linked Immunoabsorbent Assay Western Blot (Recombinant protein) Antibody Production Protein Array

 Tel: 1-631-559-9269 1-516-512-3133

 Email: info@creative-biomart.com  Fax: 1-631-938-8127

 45-1 Ramsey Road, Shirley, NY 11967, USA

Notes	Best use within three months from the date of receipt of this protein.
Storage	Store at -8 centigrade. Aliquot to avoid repeated freezing and thawing.
Storage Buffer	50 mM Tris-HCl, 10 mM reduced Glutathione, pH=8.0 in the elution buffer.

GENE INFORMATION

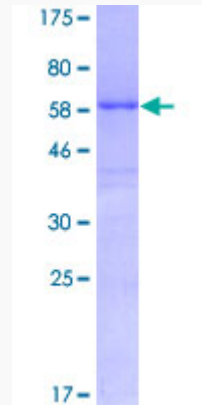
Gene Name	HHEX hematopoietically expressed homeobox [Homo sapiens]
Official Symbol	HHEX
Synonyms	HHEX; hematopoietically expressed homeobox; PRHX; hematopoietically-expressed homeobox protein HHEX; HEX; HOX11L PEN; homeobox protein HEX; homeobox protein PRH; homeobox, hematopoietically expressed; proline-rich homeodomain-containing transcription factor; PRH; HMPH; HOX11L-PEN;
Gene ID	3087
mRNA Refseq	NM_002729
Protein Refseq	NP_002720
MIM	604420
UniProt ID	Q03014

 Tel: 1-631-559-9269 1-516-512-3133

 Email: info@creative-biomart.com  Fax: 1-631-938-8127

 45-1 Ramsey Road, Shirley, NY 11967, USA

**Quality Control
Testing**



12.5% SDS-PAGE Stained with Coomassie Blue.

 Tel: 1-631-559-9269 1-516-512-3133

 Email: info@creative-biomart.com  Fax: 1-631-938-8127

 45-1 Ramsey Road, Shirley, NY 11967, USA