

Recombinant Human HHIPL1 Protein, Myc/DDK-tagged, C13 and N15-labeled

Cat. No. HHIPL1-4102H Lot. No. (See product label)

SPECIFICATION

Product Overview

HHIPL1 MS Standard C13 and N15-labeled recombinant protein (NP_115801) with a C-terminal MYC/DDK tag, was expressed in HEK293 cells.

Species

Human

Source

HEK293

Description

This gene encodes a protein that belongs to the glucose/sorbose dehydrogenase family. The encoded protein also contains a domain that binds folate and reduced folic acid derivatives.

Molecular Mass

67.7 kDa

AA Sequence

MARARAGALLALWVLGAAAHPQCLDFRPPFRPTQPLRLCAQYSDFGCCDEGRDAE
 LTRRFWALASRVDAAEWAACAGYARDLLCQECSPYAAHLYDAEDPFTPLRTPVGLC
 QDYCLDMWHKCRGLFRHLSTDQELWALEGNLARFCRYLSLDDTDYCFPYLLVNKN
 LNSNLGHVVADAKGCLQLCLEEVANGLRNPVAMVHARDGTHRFFVAEQVGLVWAY
 LPDRSRLGKPFNLISRVTSPWEGDERGFLGIAFHPSFQHNRRLYVYYSVGIRSSSE
 WIRISEFRVSEDDENAVDHSSERIILEVKEPASNHNGGQLLFGDDGYLYIFTGDGGM
 AGDPFGTFGNAQNKSAALLGKVLRIDVDRKERGLPYGIPDPNPFVGDPAAQPEVYAL
 GVRNMWRCSFDRGDPSSGTGRGRLFCGDVGQNKFEEDVVERGGNYGWRAREG
 FECYDRSLCANTSLNDLLPIFAYPHTVGKSVTGGYVYRGCEYPNLNGLYIFGDFMSG
 RLMSLQENPGTGQWQYSEICMGHGQTCEFPGLINNYYPYIISFGEDEAGELYFMST

 Tel: 1-631-559-9269 1-516-512-3133

 Email: info@creative-biomart.com  Fax: 1-631-938-8127

 45-1 Ramsey Road, Shirley, NY 11967, USA

GEPSATAPRGVVYKIIDASSCKARSAMPGYVPAPSVCSLTSQPFILQWWKTRTRPL
EQKLISEEDLAANDILDYKDDDDKV

Purity > 80% as determined by SDS-PAGE and Coomassie blue staining

Stability Stable for 3 months from receipt of products under proper storage and handling conditions.

Storage Store at -80 centigrade. Avoid repeated freeze-thaw cycles.

Concentration 50 µg/mL as determined by BCA

Storage Buffer 100 mM glycine, 25 mM Tris-HCl, pH 7.3.

GENE INFORMATION

Gene Name [HHIPL1 HHIP-like 1 \[Homo sapiens \(human\) \]](#)

Official Symbol [HHIPL1](#)

Synonyms HHIPL1; HHIP-like 1; KIAA1822; HHIP-like protein 1; ARAR9245; UNQ9245;

Gene ID [84439](#)

mRNA Refseq [NM_032425](#)

Protein Refseq [NP_115801](#)

UniProt ID [Q96JK4](#)

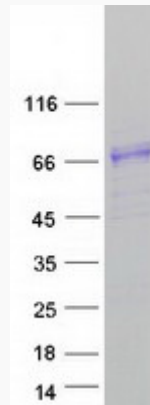
 Tel: 1-631-559-9269 1-516-512-3133

 Email: info@creative-biomart.com  Fax: 1-631-938-8127

 45-1 Ramsey Road, Shirley, NY 11967, USA



SDS-PAGE



Tel: 1-631-559-9269 1-516-512-3133

Email: info@creative-biomart.com Fax: 1-631-938-8127

45-1 Ramsey Road, Shirley, NY 11967, USA