

Active Recombinant Human HHLA2 protein, hFc-tagged

Cat. No. HHLA2-3485H Lot. No. (See product label)

SPECIFICATION

Product Overview	Recombinant Human HHLA2 protein(Q9UM44)(Met1-Lys345), fused with hFc tag, was expressed in HEK293.
Species	Human
Source	HEK293
ProteinLength	Met1-Lys345
Form	Lyophilized from 0.22 µm filtered solution in PBS, pH7.4.
Bio-activity	Recombinant Human KIR3DL3(CD158Z)/His Protein captured on NTA chip, can bind Recombinant Human B7-H7/hFC Protein with a KD constant of 7.71E-08 M, determined in a SPR assay.
Molecular Mass	The protein has a calculated MW of 63kDa. The reducing (R) heterodimer protein migrates as 70-100 kDa due to glycosylation
Endotoxin	<1EU/mg
Purity	SDS-PAGE>90%
Storage	Store at -20°C.
Reconstitution	sterile H470

 Tel: 1-631-559-9269 1-516-512-3133

 Email: info@creative-biomart.com  Fax: 1-631-938-8127

 45-1 Ramsey Road, Shirley, NY 11967, USA

GENE INFORMATION

Gene Name HHLA2 HERV-H LTR-associating 2 [Homo sapiens]

Official Symbol HHLA2

Synonyms HHLA2; HERV-H LTR-associating 2; HERV-H LTR-associating protein 2; human endogenous retrovirus-H long terminal repeat-associating protein 2;

Gene ID 11148

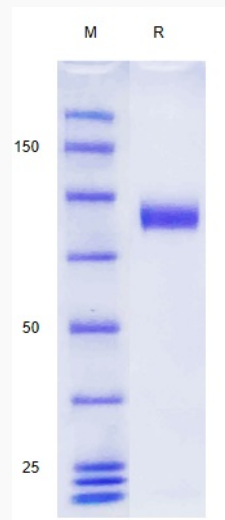
mRNA Refseq NM_007072

Protein Refseq NP_009003

MIM 604371

UniProt ID Q9UM44

SDS-PAGE

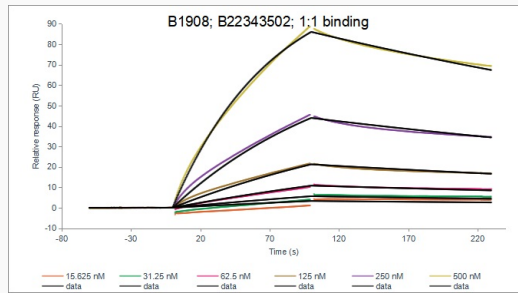


 Tel: 1-631-559-9269 1-516-512-3133

 Email: info@creative-biomart.com  Fax: 1-631-938-8127

 45-1 Ramsey Road, Shirley, NY 11967, USA

SPR



 Tel: 1-631-559-9269 1-516-512-3133

 Email: info@creative-biomart.com  Fax: 1-631-938-8127

 45-1 Ramsey Road, Shirley, NY 11967, USA