

## Recombinant Human HHLA2 protein, His-tagged

Cat. No. HHLA2-549H Lot. No. (See product label)

### SPECIFICATION

<b>Product Overview</b>	Recombinant Human HHLA2 protein(Q9UM44-1)(Ile23-Asn344), fused with C-terminal His tag, was expressed in HEK293.
<b>Species</b>	Human
<b>Source</b>	HEK293
<b>ProteinLength</b>	Ile23-Asn344
<b>Tag</b>	C-His
<b>Form</b>	Lyophilized from 0.22µm filtered solution in PBS (pH 7.4). Normally 5% trehalose is added as protectant before lyophilization.
<b>Bio-activity</b>	Immobilized Human B7-H7, His Tag at 5 µg/ml (100 µl/well) on the plate. Dose response curve for Human CD28H, hFc Tag with the EC50 of 63.4 ng/ml determined by ELISA.
<b>Molecular Mass</b>	The protein has a predicted MW of 38.1 kDa. Due to glycosylation, the protein migrates to 50-70 kDa based on Tris-Bis PAGE result.
<b>Endotoxin</b>	Less than 1EU per µg by the LAL method.
<b>Purity</b>	> 95% as determined by Tris-Bis PAGE; > 95% as determined by HPLC

 Tel: 1-631-559-9269 1-516-512-3133

 Email: [info@creative-biomart.com](mailto:info@creative-biomart.com)  Fax: 1-631-938-8127

 45-1 Ramsey Road, Shirley, NY 11967, USA

**Storage** Reconstituted protein stable at -80°C for 12 months, 4°C for 1 week. Use a manual defrost freezer and avoid repeated freeze-thaw cycles.

**Reconstitution** Centrifuge tubes before opening. Reconstituting to a concentration more than 100 µg/ml is recommended. Dissolve the lyophilized protein in distilled water.

## GENE INFORMATION

**Gene Name** [HHLA2 HERV-H LTR-associating 2 \[ Homo sapiens \]](#)

**Official Symbol** [HHLA2](#)

**Synonyms** HHLA2; HERV-H LTR-associating 2; HERV-H LTR-associating protein 2; human endogenous retrovirus-H long terminal repeat-associating protein 2;

**Gene ID** [11148](#)

**mRNA Refseq** [NM\\_007072](#)

**Protein Refseq** [NP\\_009003](#)

**MIM** [604371](#)

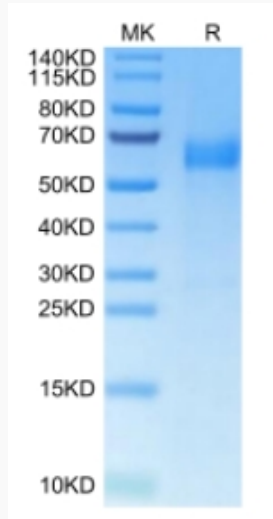
**UniProt ID** [Q9UM44](#)

 Tel: 1-631-559-9269 1-516-512-3133

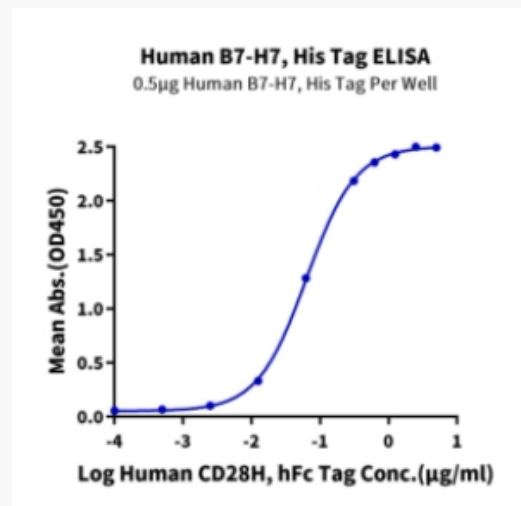
 Email: [info@creative-biomart.com](mailto:info@creative-biomart.com)  Fax: 1-631-938-8127

 45-1 Ramsey Road, Shirley, NY 11967, USA

**Tris-Bis PAGE**



**ELISA Data**



 Tel: 1-631-559-9269 1-516-512-3133

 Email: [info@creative-biomart.com](mailto:info@creative-biomart.com)  Fax: 1-631-938-8127

 45-1 Ramsey Road, Shirley, NY 11967, USA