

# Recombinant Human HIBADH Protein, Myc/DDK-tagged, C13 and N15-labeled

**Cat. No.** HIBADH-3513H    **Lot. No.** (See product label)

## SPECIFICATION

<b>Product Overview</b>	HIBADH MS Standard C13 and N15-labeled recombinant protein (NP_689953) with a C-terminal MYC/DDK tag, was expressed in HEK293 cells.
<b>Species</b>	Human
<b>Source</b>	HEK293
<b>Description</b>	This gene encodes a mitochondrial 3-hydroxyisobutyrate dehydrogenase enzyme. The encoded protein plays a critical role in the catabolism of L-valine by catalyzing the oxidation of 3-hydroxyisobutyrate to methylmalonate semialdehyde.
<b>Molecular Mass</b>	35.3 kDa
<b>AA Sequence</b>	MAASLRLGGAASGLRYWSRRLRPAAGSFAAVCSRSVASKTPVGFGLGNMGNPMA KNLMKHGYPLIYDVFPDACEFQDAGEQVVSSPADVAEKADRIITMLPTSINAIEAYS GANGILKKVKKGSLIDSSTIDPAVSKELAKEVEKMGAVFMDAPVSGGVGAARSGNL TFMVGGVEDEFAAAQELLGCMGSNVVYCGAVGTGQAAKICNNMLLAISMIGTAEAM NLGIRLGLDPKLLAKILNMSSGRCWSSDTYNPVPVGMVMDGVPSANNYQGGFGTTLMA KDLGLAQDSATSTKSPILLGSLAHQIYRMMCAKGYSKKDFSSVFQFLREEETFTRTR PLEQKLISEEDLAANDILDYKDDDDKV
<b>Purity</b>	> 80% as determined by SDS-PAGE and Coomassie blue staining
<b>Stability</b>	Stable for 3 months from receipt of products under proper storage and handling

 Tel: 1-631-559-9269    1-516-512-3133

 Email: [info@creative-biomart.com](mailto:info@creative-biomart.com)     Fax: 1-631-938-8127

 45-1 Ramsey Road, Shirley, NY 11967, USA

conditions.

**Storage** Store at -80 centigrade. Avoid repeated freeze-thaw cycles.

**Concentration** 50 µg/mL as determined by BCA

**Storage Buffer** 100 mM glycine, 25 mM Tris-HCl, pH 7.3.

## GENE INFORMATION

**Gene Name** [HIBADH 3-hydroxyisobutyrate dehydrogenase \[ Homo sapiens \(human\) \]](#)

**Official Symbol** [HIBADH](#)

**Synonyms** HIBADH; 3-hydroxyisobutyrate dehydrogenase; 3-hydroxyisobutyrate dehydrogenase, mitochondrial; NS5ATP1; MGC40361;

**Gene ID** [11112](#)

**mRNA Refseq** [NM\\_152740](#)

**Protein Refseq** [NP\\_689953](#)

**MIM** [608475](#)

**UniProt ID** [P31937](#)

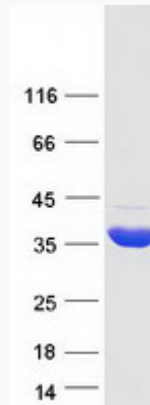
 Tel: 1-631-559-9269 1-516-512-3133

 Email: [info@creative-biomart.com](mailto:info@creative-biomart.com)  Fax: 1-631-938-8127

 45-1 Ramsey Road, Shirley, NY 11967, USA



SDS-PAGE



Tel: 1-631-559-9269 1-516-512-3133

Email: [info@creative-biomart.com](mailto:info@creative-biomart.com) Fax: 1-631-938-8127

45-1 Ramsey Road, Shirley, NY 11967, USA