

# Recombinant Full Length Human HIF1A Protein, N-GST-tagged

Cat. No. HIF1A-01H Lot. No. (See product label)

## SPECIFICATION

<b>Product Overview</b>	Human HIF1A full-length ORF ( NP_851397.1, 1 a.a. - 735 a.a.) recombinant protein with GST-tag at N-terminal.
<b>Species</b>	Human
<b>Source</b>	Wheat Germ
<b>ProteinLength</b>	1-735aa
<b>Description</b>	This gene encodes the alpha subunit of transcription factor hypoxia-inducible factor-1 (HIF-1), which is a heterodimer composed of an alpha and a beta subunit. HIF-1 functions as a master regulator of cellular and systemic homeostatic response to hypoxia by activating transcription of many genes, including those involved in energy metabolism, angiogenesis, apoptosis, and other genes whose protein products increase oxygen delivery or facilitate metabolic adaptation to hypoxia. HIF-1 thus plays an essential role in embryonic vascularization, tumor angiogenesis and pathophysiology of ischemic disease. Alternatively spliced transcript variants encoding different isoforms have been identified for this gene.
<b>Form</b>	50 mM Tris-HCl, 10 mM reduced Glutathione, pH=8.0 in the elution buffer.
<b>Molecular Mass</b>	109.1 kDa
<b>AA Sequence</b>	MEGAGGANDKKKISSERRKEKSRDAARRSRKSESEVFYELAHQLPLPHNVSSHLDK ASVMRLTISYLRVRKLLDAGDLIEDDMKAQMNCFYLKALDGFVMVLTDGDMIYIS

 Tel: 1-631-559-9269 1-516-512-3133

 Email: [info@creative-biomart.com](mailto:info@creative-biomart.com)  Fax: 1-631-938-8127

 45-1 Ramsey Road, Shirley, NY 11967, USA

DNVNKYMGLTQFELTGHSVDFDFTHPCDHEEMREMLTHRNGLVKKGKEQNTQRSFF  
 LRMKCTLTSRGRMTNIKSATWKVLHCTGHIHVYDTNSNQPCGYKKPPMTCLVLIC  
 EPIPHPSNIEIPLDSKTFLSRHSLDMKFSYCDERITELMGYEPEELLGRSIYEYYHALD  
 SDHLTKTHHDMFTKGQVTTGQYRMLAKRGGYVWVETQATVIYNTKNSQPQCIVCV  
 NYVVSGIIQHDLIFSLQQTECVLKPVESSDMKMTQLFTKVESEDTSSELDKLLKKEPDA  
 LTLAPAAAGDTIISLDFGSNDTETDDQQLEEPLYNDVMLPSPNEKLQINLAMSPLP  
 TAETPKPLRSSADPALNQEVALKLEPNPESLELSFTMPQIQDQTPSPSDGSTRQSSP  
 EPNSPSEYCFYVDSDMVNEFKLELVEKLFADTEAKNPFSTQDLDLEMLAPYIPM  
 DDDFQLRSFDQLSPLESSSASPESASPQSTVTVFQQTQIQEPTANATTTTATTDELK  
 TVTKDRMEDIKILIASPSPTHIHKETTSATSSPYRDTQSRTASPNRAGKGVIEQTEKSH  
 PRSPNVLSVALSQRTTVPEEELNPKILALQNAQRKRKMEHDGSLFQAVGII

**Purity** Glutathione Sepharose 4 Fast Flow

**Applications** Enzyme-linked Immunoabsorbent Assay  
Western Blot (Recombinant protein)  
Antibody Production  
Protein Array

**Notes** Best use within three months from the date of receipt of this protein.

**Storage** Store at -80 centigrade. Aliquot to avoid repeated freezing and thawing.

## GENE INFORMATION

**Gene Name** HIF1A hypoxia inducible factor 1 subunit alpha [ Homo sapiens (human) ]

**Official Symbol** HIF1A

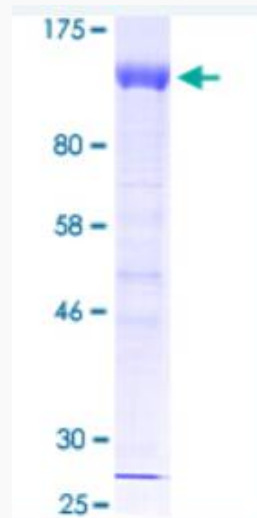
**Synonyms** HIF1; MOP1; PASD8; HIF-1A; bHLHe78; HIF-1alpha; HIF1-ALPHA; HIF-1-alpha

 Tel: 1-631-559-9269 1-516-512-3133

 Email: [info@creative-biomart.com](mailto:info@creative-biomart.com)  Fax: 1-631-938-8127

 45-1 Ramsey Road, Shirley, NY 11967, USA

Gene ID	3091
mRNA Refseq	NM_181054.1
Protein Refseq	NP_851397.1
MIM	603348
UniProt ID	Q16665

**SDS-PAGE**

12.5% SDS-PAGE Stained with Coomassie Blue.

 Tel: 1-631-559-9269 1-516-512-3133

 Email: [info@creative-biomart.com](mailto:info@creative-biomart.com)  Fax: 1-631-938-8127

 45-1 Ramsey Road, Shirley, NY 11967, USA