

Recombinant Human HIF1A protein, His-tagged

Cat. No. HIF1A-5279H Lot. No. (See product label)

SPECIFICATION

Product Overview	Recombinant Human HIF1A protein(Q16665)(579-826aa), fused to N-terminal His tag, was expressed in E. coli.
Species	Human
Source	E.coli
ProteinLength	579-826aa
Form	If the delivery form is liquid, the default storage buffer is Tris/PBS-based buffer, 5%-50% glycerol. If the delivery form is lyophilized powder, the buffer before lyophilization is Tris/PBS-based buffer, 6% Trehalose, pH 8.0.
Molecular Mass	31 kDa
Purity	Greater than 90% as determined by SDS-PAGE.
Storage	Store at -20°C/-80°C upon receipt, aliquoting is necessary for mutiple use. Avoid repeated freeze-thaw cycles.
Reconstitution	Please reconstitute protein in deionized sterile water to a concentration of 0.1-1.0 mg/mL. We recommend to add 5-50% of glycerol (final concentration) and aliquot for long-term storage at -20°C/-80°C. Our default final concentration of glycerol is 50%.

 Tel: 1-631-559-9269 1-516-512-3133

 Email: info@creative-biomart.com  Fax: 1-631-938-8127

 45-1 Ramsey Road, Shirley, NY 11967, USA

GENE INFORMATION

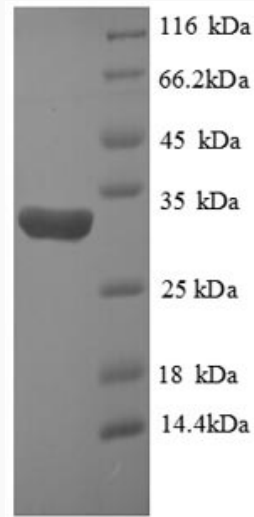
Gene Name	HIF1A hypoxia inducible factor 1, alpha subunit (basic helix-loop-helix transcription factor) [Homo sapiens]
Official Symbol	HIF1A
Synonyms	HIF1A; hypoxia inducible factor 1, alpha subunit (basic helix-loop-helix transcription factor); hypoxia-inducible factor 1-alpha; bHLHe78; HIF 1alpha; HIF1; MOP1; PASD8; HIF-1-alpha; member of PAS protein 1; ARNT interacting protein; ARNT-interacting protein; member of PAS superfamily 1; PAS domain-containing protein 8; basic-helix-loop-helix-PAS protein MOP1; class E basic helix-loop-helix protein 78; hypoxia-inducible factor 1 alpha isoform I.3; hypoxia-inducible factor 1, alpha subunit (basic helix-loop-helix transcription factor); HIF-1alpha; HIF1-ALPHA;
Gene ID	3091
mRNA Refseq	NM_001243084
Protein Refseq	NP_001230013
MIM	603348
UniProt ID	Q16665

 Tel: 1-631-559-9269 1-516-512-3133

 Email: info@creative-biomart.com  Fax: 1-631-938-8127

 45-1 Ramsey Road, Shirley, NY 11967, USA

SDS-PAGE



 Tel: 1-631-559-9269 1-516-512-3133

 Email: info@creative-biomart.com  Fax: 1-631-938-8127

 45-1 Ramsey Road, Shirley, NY 11967, USA