

Recombinant Chicken HIF1A protein, His-tagged

Cat. No. HIF1A-7715C Lot. No. (See product label)

SPECIFICATION

Product Overview	Recombinant Chicken HIF1A aa. (Asp238~Lys389 (Accession # Q9YIB9)) fused with N-terminal His tag was produced in E. coli cells.
Species	Chicken
Source	E.coli
ProteinLength	Asp238~Lys389
Form	Freeze-dried powder
Molecular Mass	Predicted Molecular Mass: 18.9kDa
Endotoxin	<1.0EU per 1g (determined by the LAL method)
Purity	>95%
Characteristic	The isoelectric point is 9.3.
Applications	SDS-PAGE; WB; ELISA; IP.
Stability	The thermal stability is described by the loss rate. The loss rate was determined by accelerated thermal degradation test, that is, incubate the protein at 37°C for 48h, and no obvious degradation and precipitation were observed. The loss rate is less than 5% within the expiration date under appropriate storage condition.

 Tel: 1-631-559-9269 1-516-512-3133

 Email: info@creative-biomart.com  Fax: 1-631-938-8127

 45-1 Ramsey Road, Shirley, NY 11967, USA

Storage	Avoid repeated freeze/thaw cycles. Store at 2-8°C for one month. Aliquot and store at -80°C for 12 months.
----------------	--

Storage buffer	Supplied as lyophilized form in 20mM Tris, 500mM NaCl, pH8.0, containing 1mM EDTA, 1mM DTT, 0.01% sarcosyl, 5% trehalose, and preservative.
-----------------------	---

Reconstitution	Reconstitute in ddH ₂ O.
-----------------------	-------------------------------------

GENE INFORMATION

Gene Name	HIF1A hypoxia inducible factor 1 alpha subunit [Gallus gallus (chicken)]
------------------	--

Official Symbol	HIF1A
------------------------	-------

Synonyms	HIF-1-alpha; HIF1-alpha; hypoxia-inducible factor 1, alpha subunit (basic helix-loop-helix transcription factor); hypoxia-inducible factor 1-alpha
-----------------	--

Gene ID	374177
----------------	--------

mRNA Refseq	NM_204297.1
--------------------	-------------

Protein Refseq	NP_989628.1
-----------------------	-------------

UniProt ID	Q9YIB9
-------------------	--------

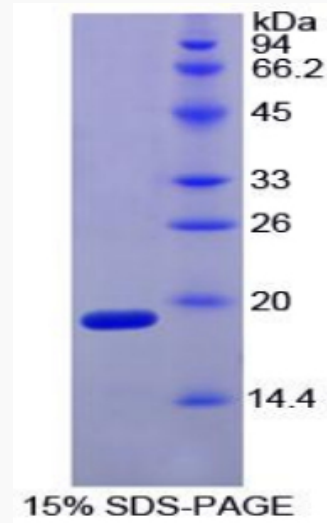
 Tel: 1-631-559-9269 1-516-512-3133

 Email: info@creative-biomart.com  Fax: 1-631-938-8127

 45-1 Ramsey Road, Shirley, NY 11967, USA



SDS-PAGE



Tel: 1-631-559-9269 1-516-512-3133

Email: info@creative-biomart.com Fax: 1-631-938-8127

45-1 Ramsey Road, Shirley, NY 11967, USA