

Recombinant Chicken HIF1A protein, His-tagged

Cat. No. HIF1A-7716C Lot. No. (See product label)

SPECIFICATION

Product Overview	Recombinant Chicken HIF1A aa. (Glu35~Val155 (Accession # Q9YIB9)) fused with N-terminal His tag was produced in E. coli cells.
Species	Chicken
Source	E.coli
ProteinLength	Glu35~Val155
Form	Freeze-dried powder
Molecular Mass	Predicted Molecular Mass: 15.5kDa
Endotoxin	<1.0EU per 1g (determined by the LAL method)
Purity	>95%
Characteristic	The isoelectric point is 5.5.
Applications	SDS-PAGE; WB; ELISA; IP.
Stability	The thermal stability is described by the loss rate. The loss rate was determined by accelerated thermal degradation test, that is, incubate the protein at 37°C for 48h, and no obvious degradation and precipitation were observed. The loss rate is less than 5% within the expiration date under appropriate storage condition.

 Tel: 1-631-559-9269 1-516-512-3133

 Email: info@creative-biomart.com  Fax: 1-631-938-8127

 45-1 Ramsey Road, Shirley, NY 11967, USA

Storage	Avoid repeated freeze/thaw cycles. Store at 2-8°C for one month. Aliquot and store at -80°C for 12 months.
Storage buffer	Supplied as lyophilized form in PBS, pH7.4, containing 5% sucrose, 0.01% sarcosyl.
Reconstitution	Reconstitute in sterile PBS, pH7.2-pH7.4.

GENE INFORMATION

Gene Name	HIF1A hypoxia inducible factor 1 alpha subunit [Gallus gallus (chicken)]
Official Symbol	HIF1A
Synonyms	HIF-1-alpha; HIF1-alpha; hypoxia-inducible factor 1, alpha subunit (basic helix-loop-helix transcription factor); hypoxia-inducible factor 1-alpha
Gene ID	374177
mRNA Refseq	NM_204297.1
Protein Refseq	NP_989628.1
UniProt ID	Q9YIB9

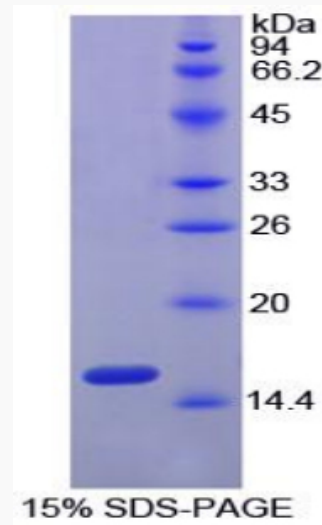
 Tel: 1-631-559-9269 1-516-512-3133

 Email: info@creative-biomart.com  Fax: 1-631-938-8127

 45-1 Ramsey Road, Shirley, NY 11967, USA



SDS-PAGE



Tel: 1-631-559-9269 1-516-512-3133

Email: info@creative-biomart.com Fax: 1-631-938-8127

45-1 Ramsey Road, Shirley, NY 11967, USA